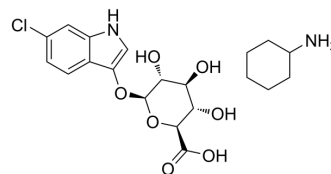


6-Chloro-3-indolyl- β -D-glucuronide cyclohexylammonium

| | |
|--------------------|---|
| Cat. No.: | HY-137816 |
| CAS No.: | 138182-20-4 |
| Molecular Formula: | C ₂₀ H ₂₇ ClN ₂ O ₇ |
| Molecular Weight: | 442.89 |
| Target: | Others |
| Pathway: | Others |
| Storage: | Please store the product under the recommended conditions in the Certificate of Analysis. |



BIOLOGICAL ACTIVITY

Description

6-Chloro-3-indolyl- β -D-glucuronide cyclohexylammonium salt is a chromogenic substrate for β -glucuronidase. 6-Chloro-3-indolyl- β -D-glucuronide cyclohexylammonium salt produces a salmon colored precipitate upon cleavage^[1].

REFERENCES

[1]. Youhua Wang, et al. Expression of NAC1 up-stream regulatory region and its relationship to the lateral root initiation induced by gibberellins and auxins. *Sci China C Life Sci.* 2006 Oct;49(5):429-35.

Caution: Product has not been fully validated for medical applications. For research use only.

Tel: 609-228-6898

Fax: 609-228-5909

E-mail: tech@MedChemExpress.com

Address: 1 Deer Park Dr, Suite Q, Monmouth Junction, NJ 08852, USA