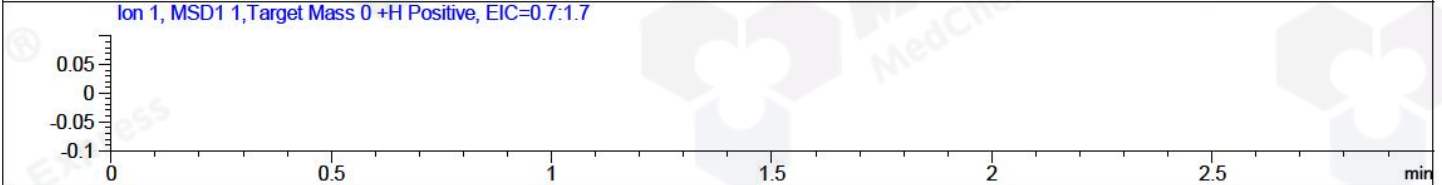
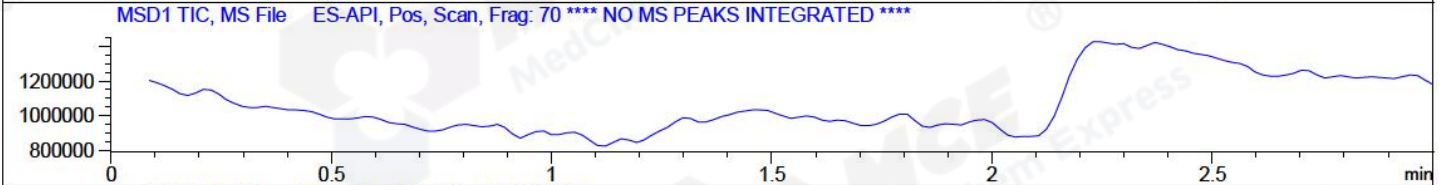
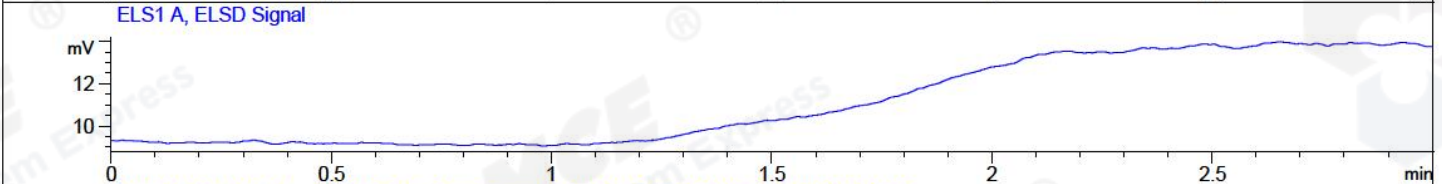
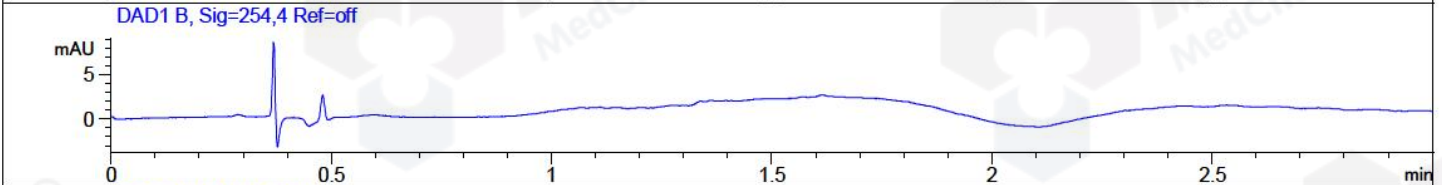
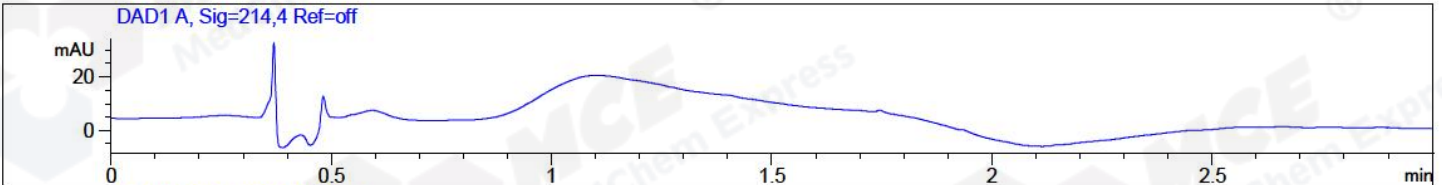


File ..\2018\20180327\20180327-2\WSY5118-004-3\_0.D Tgt Mass (CHM):  
 Injection Date : 27 Mar 18 6:07 pm +0800 Seq. Line : 17  
 Sample Name : WSY5118-004-3\_0 Location : P1-D-07  
 Acq. Operator : SYSTEM Inj : 1  
 Spec. Reported : MS Integration Inj Volume : 1 ul  
 Acq. Method : D:\LCMS03\Data\2018\20180327\20180327-2\1-POS-3MIN.M  
 Analysis Method : D:\LCMS03\Data\2018\20180327\20180327-2\1-POS-3MIN.M  
 Catalog No : HY-13788C Batch#29295  
 Method Info : Mobile Phase: A: water(0.01%TFA) B:ACN(0.01%TFA)  
 Gradient: 5% to 95%B within 1.3 min  
 Flow Rate :1.8ml/min  
 Column :SunFire C18, 4.6\*50mm,3.5um A-RP-186  
 Oven Temperature : 45C



Integration Results for DAD1 A, Sig=214,4 Ref=off

RetTim	Width	Area	Height	Area%	MS (+)
-----	-----	-----	-----	-----	-----

Integration Results for DAD1 B, Sig=254,4 Ref=off

RetTim	Width	Area	Height	Area%	MS (+)
-----	-----	-----	-----	-----	-----

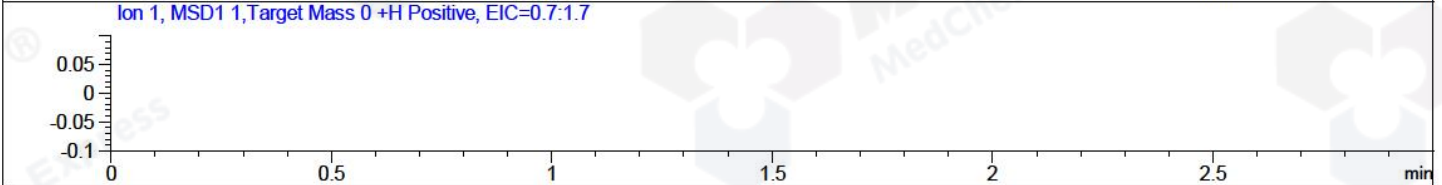
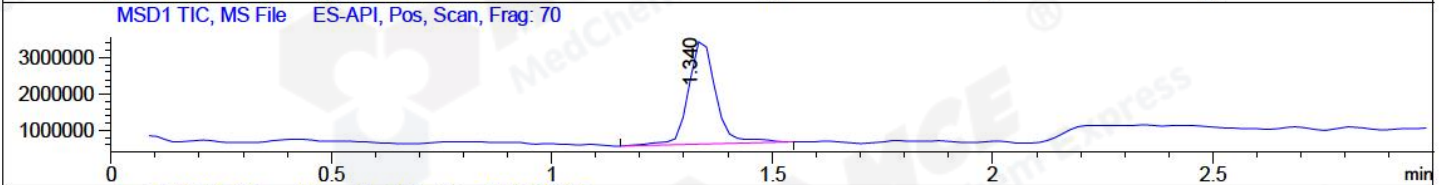
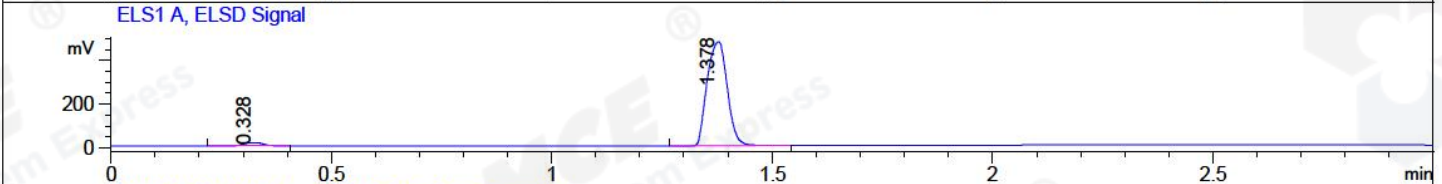
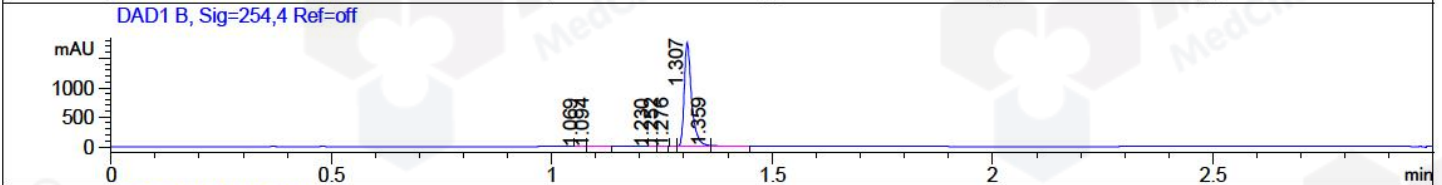
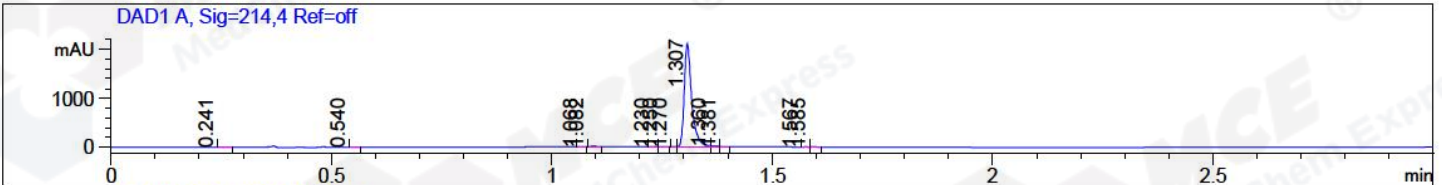
Integration Results for ELS1 A, ELSD Signal

RetTim	Width	Area	Height	Area%	MS (+)
-----	-----	-----	-----	-----	-----

Integration Results for MSD1 TIC, MS File

RetTim	Width	Area	Height	Area%	MS (+)
-----	-----	-----	-----	-----	-----

File ..ta\2018\20180327\20180327-2\WSY5118-004-3.D Tgt Mass (CHM):  
 Injection Date : 27 Mar 18 6:12 pm +0800 Seq. Line : 18  
 Sample Name : WSY5118-004-3 Location : P1-D-08  
 Acq. Operator : SYSTEM Inj : 1  
 Spec. Reported : MS Integration Inj Volume : 1 ul  
 Acq. Method : D:\LCMS03\Data\2018\20180327\20180327-2\1-POS-3MIN.M  
 Analysis Method : D:\LCMS03\Data\2018\20180327\20180327-2\1-POS-3MIN.M  
 Catalog No : HY-13788C Batch#29295  
 Method Info : Mobile Phase: A: water(0.01%TFA) B:ACN(0.01%TFA)  
 Gradient: 5% to 95%B within 1.3 min  
 Flow Rate :1.8ml/min  
 Column :SunFire C18, 4.6\*50mm,3.5um A-RP-186  
 Oven Temperature : 45C



Integration Results for DAD1 A, Sig=214,4 Ref=off

RetTim	Width	Area	Height	Area%	MS (+)
0.24	0.02	1.64	0.06	0.07	130
0.54	0.01	1.14	-0.11	0.05	130
1.07	0.01	0.24	0.33	0.01	130
1.08	0.02	1.33	0.06	0.05	130
1.23	0.02	0.71	0.67	0.03	130
1.25	0.02	0.91	0.96	0.04	130
1.27	0.01	0.78	-0.09	0.03	130
1.31	0.02	2468.23	2104.03	98.88	352
1.36	0.01	16.54	18.85	0.66	130
1.38	0.01	3.17	5.31	0.13	130
1.57	0.01	0.51	0.03	0.02	130
1.58	0.02	1.12	0.44	0.04	130

Integration Results for DAD1 B, Sig=254,4 Ref=off

RetTim	Width	Area	Height	Area%	MS (+)
1.07	0.02	0.47	0.50	0.02	130
1.09	0.02	1.92	1.85	0.09	130

1.23	0.01	0.12	0.15	0.01	130
1.25	0.02	0.57	0.63	0.03	130
1.28	0.01	1.00	1.66	0.05	130
1.31	0.02	2052.45	1760.50	98.94	352
1.36	0.02	17.93	15.84	0.86	130

## Integration Results for ELS1 A, ELSD Signal

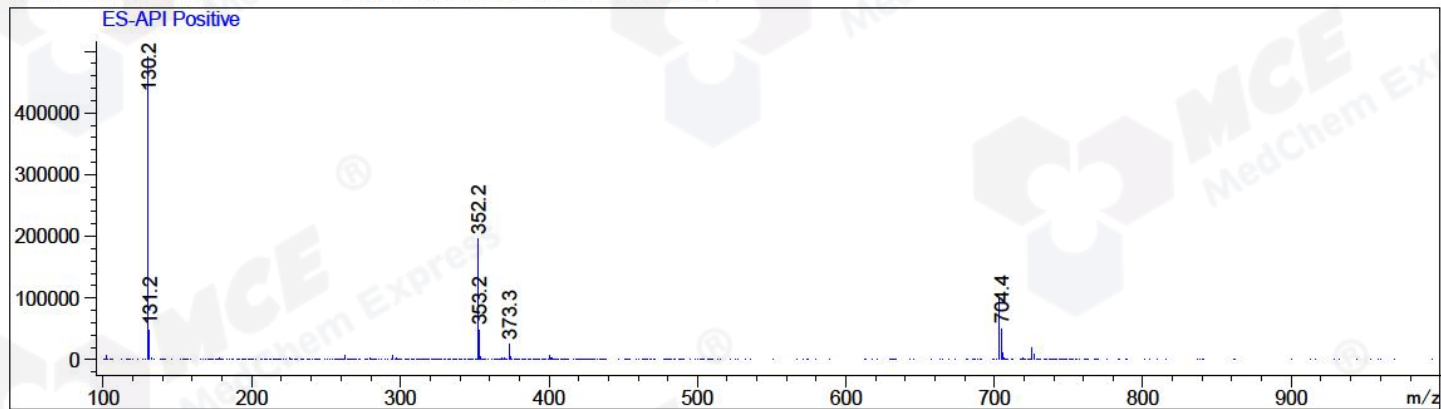
RetTim	Width	Area	Height	Area%	MS (+)
0.33	0.05	42.49	13.81	2.75	130
1.38	0.05	1501.57	473.99	97.25	130

## Integration Results for MSD1 TIC, MS File

RetTim	Width	Area	Height	Area%	MS (+)
1.34	0.07	12219054.00	2890472.00	100.00	130

Ret. Time: 1.34

<<<< POSITIVE SPECTRA >>>>



\*\*\* End of Report \*\*\*