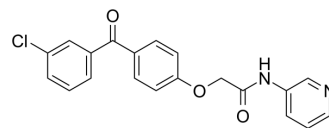


## LUF7244

<b>Cat. No.:</b>	HY-137986
<b>CAS No.:</b>	1821638-43-0
<b>Molecular Formula:</b>	C <sub>20</sub> H <sub>15</sub> ClN <sub>2</sub> O <sub>3</sub>
<b>Molecular Weight:</b>	366.8
<b>Target:</b>	Potassium Channel
<b>Pathway:</b>	Membrane Transporter/Ion Channel
<b>Storage:</b>	Please store the product under the recommended conditions in the Certificate of Analysis.



### BIOLOGICAL ACTIVITY

<b>Description</b>	LUF7244 is a selective allosteric modulator of K <sub>v</sub> 11.1 channels. LUF7244 inhibits early afterdepolarizations. LUF7244 can be used for anti-arrhythmia research <sup>[1]</sup> .
<b>In Vitro</b>	LUF7244 (0-10 μM; HEK293 cells) binds K <sub>v</sub> 11.1 channels and increases I <sub>Kv11.1</sub> by inhibiting inactivation in a dose-dependent manner <sup>[1]</sup> . LUF7244 (0-10 μM; cardiomyocytes) reduces action potential duration (APD) by approximately 50% and dofetilide-induced early afterdepolarization (EAD) in isolated ventricular CMCs from SR and CAVB dogs <sup>[1]</sup> . LUF7244 (10 μM) had no effects on I <sub>KIR2.1</sub> , I <sub>Nav1.5</sub> , I <sub>Ca-L</sub> , and I <sub>Ks</sub> but doubled I <sub>Kr</sub> <sup>[1]</sup> . MCE has not independently confirmed the accuracy of these methods. They are for reference only.
<b>In Vivo</b>	LUF7244 (2.5 mg/kg; i.v.; for 15 min) decreases repolarization parameters. LUF7244 has antiarrhythmic effects against dofetilide-induced TdP arrhythmias in CAVB dogs <sup>[1]</sup> . MCE has not independently confirmed the accuracy of these methods. They are for reference only.

### REFERENCES

[1]. Qile M, et, al. LUF7244, an allosteric modulator/activator of Kv 11.1 channels, counteracts dofetilide-induced torsades de pointes arrhythmia in the chronic atrioventricular block dog model. Br J Pharmacol. 2019 Oct;176(19):3871-3885.

**Caution: Product has not been fully validated for medical applications. For research use only.**

Tel: 609-228-6898

Fax: 609-228-5909

E-mail: tech@MedChemExpress.com

Address: 1 Deer Park Dr, Suite Q, Monmouth Junction, NJ 08852, USA