

File ..\DATA\2020\20200424\936\BIZ2020-423-WMX2-.D Tgt Mass (CHM):

Injection Date : 24 Apr 20 2:56 pm +0800 Seq. Line : 66

Sample Name : BIZ2020-423-WMX2 Location : PL-A-09

Acq. Operator : ZJ_1432 Inj : 1

Spec. Reported : MS Integration Inj Volume : 0.5 ul

Acq. Method : D:\Chem32\1\data\2020\20200424\936\1-POS-3MIN.M

Analysis Method : D:\CHEM32\1\DATA\2020\20200424\936\1-POS-3MIN.M

Catalog No : HY-13803

Method Info : Mobile Phase: A: water(0.01%TFA) B:ACN(0.01%TFA)

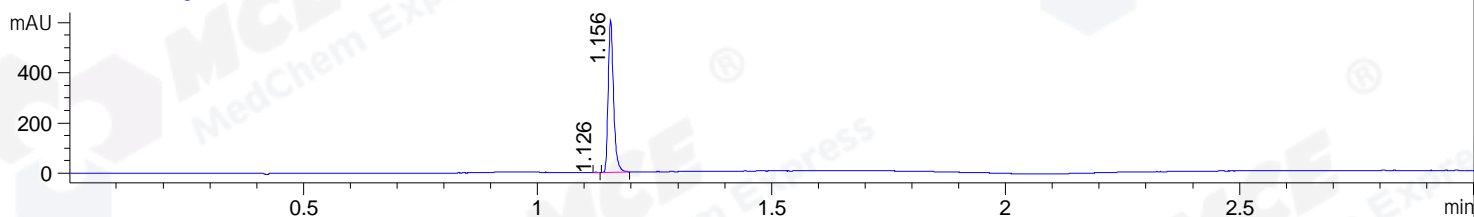
Gradient: 5% to 95%B within 1.3 min

Flow Rate :1.8ml/min

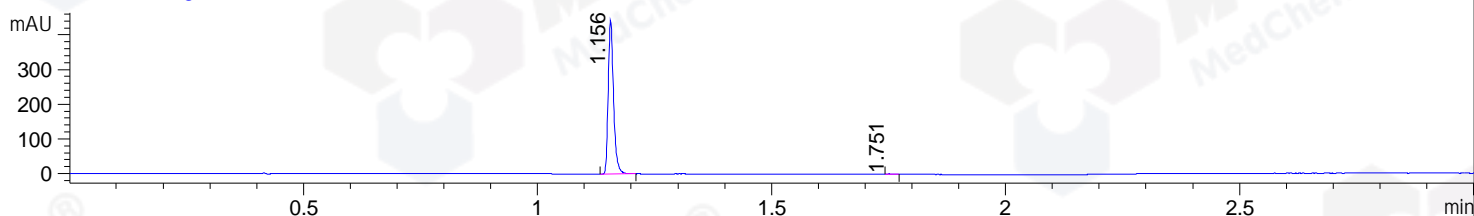
Column :SunFire C18, 4.6*50mm,3.5um A-RP-607

Oven Temperature : 45

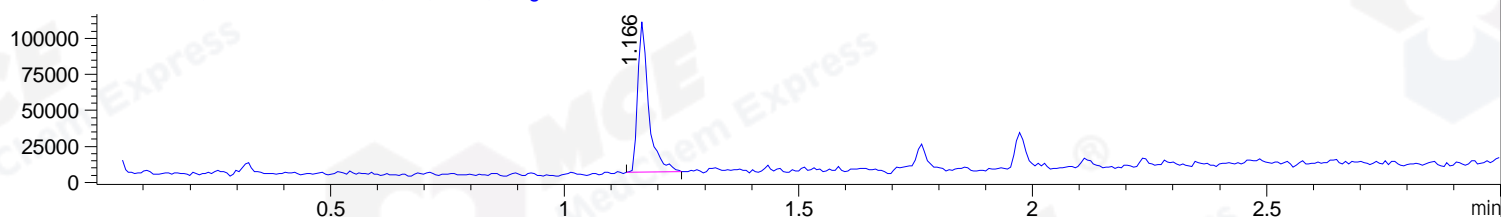
DAD1 B, Sig=214,4 Ref=off



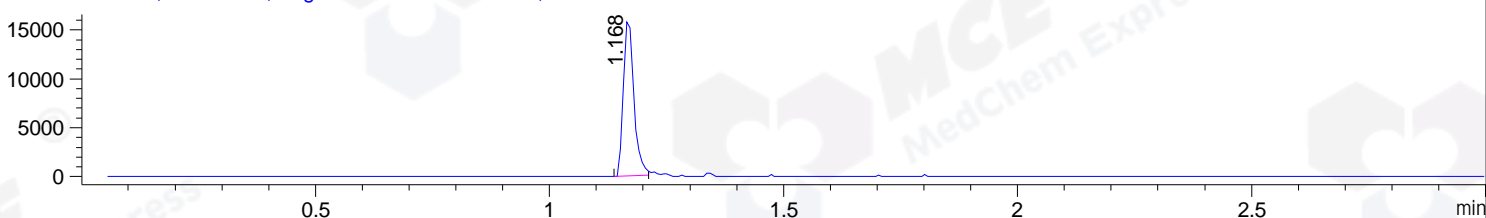
DAD1 C, Sig=254,4 Ref=off



MSD1 TIC, MS File ES-API, Pos, Scan, Frag: 70



Ion 573, MSD1 573, Target Mass 572 +H Positive, EIC=572.7:573.7



Integration Results for DAD1 B, Sig=214,4 Ref=off

RetTim	Width	Area	Height	Area%	MS (+)
1.13	0.01	0.32	0.80	0.07	130
1.16	0.01	478.77	606.94	99.93	287

Integration Results for DAD1 C, Sig=254,4 Ref=off

RetTim	Width	Area	Height	Area%	MS (+)
1.16	0.01	350.02	443.78	99.74	287
1.75	0.01	0.92	1.20	0.26	267

Integration Results for MSD1 TIC, MS File

RetTim	Width	Area	Height	Area%	MS (+)
1.17	0.02	165950.23	104783.43	100.00	287

Ret. Time: 1.17

<<<< POSITIVE SPECTRA >>>>

ES-API Positive

