

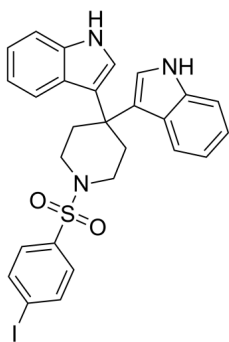
SIC5-6

Cat. No.: HY-138084
Batch No.: 253843
CAS No.: 2410846-16-9
Molecular Formula: C₂₇H₂₄IN₃O₂S

ANALYTICAL DATA

Theoretical: C(55.77%), H(4.16%), N(7.23%)
Result: C(55.80%), H(4.15%), N(7.22%)

Chemical Structure:



Caution: Product has not been fully validated for medical applications. For research use only.

Tel: 609-228-6898

Fax: 609-228-5909

E-mail: tech@MedChemExpress.com

Address: 1 Deer Park Dr, Suite Q, Monmouth Junction, NJ 08852, USA