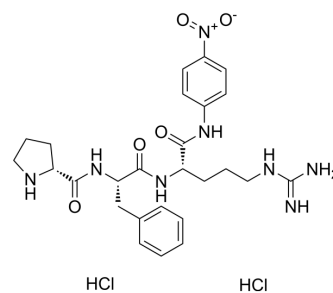


## D-Pro-Phe-Arg-pNA hydrochloride

Cat. No.:	HY-138109
CAS No.:	62354-56-7
Molecular Formula:	C <sub>26</sub> H <sub>36</sub> Cl <sub>2</sub> N <sub>8</sub> O <sub>5</sub>
Molecular Weight:	611.52
Sequence:	{d-Pro}-Phe-Arg-{pNA}
Sequence Shortening:	{d-Pro}-FR-{pNA}
Target:	Others
Pathway:	Others
Storage:	Please store the product under the recommended conditions in the Certificate of Analysis.



### BIOLOGICAL ACTIVITY

Description	D-Pro-Phe-Arg-pNA hydrochloride is the substrate for thrombin-like enzyme, with $K_m$ of 50.7 $\mu\text{M}$ <sup>[1]</sup> .
-------------	--

### REFERENCES

[1]. Magalhães HP, et al., Mechanism of action and determination of the best substrate for a thrombin-like enzyme from *Lachesis muta muta* venom by regression analysis of the kinetic parameters determined with peptidyl p-nitroanilide substrates. *Toxicol.* 2006 Mar 15;47(4):453-8.

**Caution: Product has not been fully validated for medical applications. For research use only.**

Tel: 609-228-6898

Fax: 609-228-5909

E-mail: tech@MedChemExpress.com

Address: 1 Deer Park Dr, Suite Q, Monmouth Junction, NJ 08852, USA