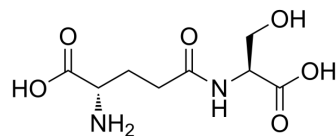


γ-Glutamylserine

Cat. No.:	HY-138119
CAS No.:	5875-35-4
Molecular Formula:	C ₈ H ₁₄ N ₂ O ₆
Molecular Weight:	234.21
Target:	Others
Pathway:	Others
Storage:	Sealed storage, away from moisture and light, under nitrogen Powder -80°C 2 years -20°C 1 year



* In solvent : -80°C, 6 months; -20°C, 1 month (sealed storage, away from moisture and light, under nitrogen)

SOLVENT & SOLUBILITY

In Vitro

DMSO : 100 mg/mL (426.97 mM; Need ultrasonic)

Concentration	Mass		
	1 mg	5 mg	10 mg
1 mM	4.2697 mL	21.3484 mL	42.6967 mL
5 mM	0.8539 mL	4.2697 mL	8.5393 mL
10 mM	0.4270 mL	2.1348 mL	4.2697 mL

Please refer to the solubility information to select the appropriate solvent.

BIOLOGICAL ACTIVITY

Description

γ-Glutamylserine (γ-Glu-Ser) is a calcium receptor activator. γ-Glutamylserine can be used for Parkinson's disease research, as well as diabetes or obesity study^{[1][2]}.

REFERENCES

[1]. Nagasaki Hiroaki, et al. Low-fat foods containing amino acids and peptides: World Intellectual Property Organization, WO2008139945. 2008-11-20.

[2]. Chen Xianyang, et al. Application of taurine and ceramide biomarker in detection reagent preparation for preventing and treating Parkinson's disease: China, CN114047281. 2022-02-15.

Caution: Product has not been fully validated for medical applications. For research use only.

Tel: 609-228-6898

Fax: 609-228-5909

E-mail: tech@MedChemExpress.com

Address: 1 Deer Park Dr, Suite Q, Monmouth Junction, NJ 08852, USA