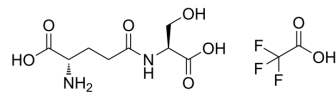


γ-Glutamylserine TFA

| | |
|--------------------|---|
| Cat. No.: | HY-138119A |
| Molecular Formula: | C ₁₀ H ₁₅ F ₃ N ₂ O ₈ |
| Molecular Weight: | 348.23 |
| Target: | Calcium Channel |
| Pathway: | Membrane Transporter/Ion Channel; Neuronal Signaling |
| Storage: | Please store the product under the recommended conditions in the Certificate of Analysis. |



BIOLOGICAL ACTIVITY

Description

γ-Glutamylserine TFA (γ-Glu-Ser TFA) is a calcium receptor activator. γ-Glutamylserine TFA can be used for Parkinson's disease research, as well as diabetes or obesity study^{[1][2]}.

REFERENCES

[1]. NagasakiHiroaki, et al. Low-fat foods containing amino acids and peptides: WorldIntellectual Property Organization, WO2008139945. 2008-11-20.

[2]. Chen Xianyang, et al. Application of taurine and ceramide biomarker in detection reagent preparation for preventing and treating Parkinson's disease: China, CN114047281. 2022-02-15.

Caution: Product has not been fully validated for medical applications. For research use only.

Tel: 609-228-6898

Fax: 609-228-5909

E-mail: tech@MedChemExpress.com

Address: 1 Deer Park Dr, Suite Q, Monmouth Junction, NJ 08852, USA