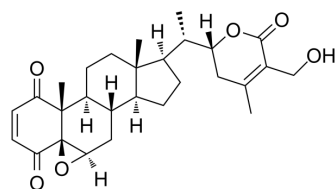


## 4-Dehydrowithaferin A

Cat. No.:	HY-138146
CAS No.:	6850-30-2
Molecular Formula:	C <sub>28</sub> H <sub>36</sub> O <sub>6</sub>
Molecular Weight:	468.58
Target:	Others
Pathway:	Others
Storage:	Please store the product under the recommended conditions in the Certificate of Analysis.



### BIOLOGICAL ACTIVITY

#### Description

4-Dehydrowithaferin A is the analogue of withaferin A. Withaferin A is a withanolide isolated from *Withania somnifera*. 4-Dehydrowithaferin A has the potential for the research of multiple myeloma<sup>[1]</sup>.

### REFERENCES

[1]. Freitas Misakyan MF, et al. Structure-Activity Relationships of Withanolides as Antiproliferative Agents for Multiple Myeloma: Comparison of Activity in 2D Models and a 3D Coculture Model. *J Nat Prod.* 2021;84(8):2321-2335.

**Caution: Product has not been fully validated for medical applications. For research use only.**

Tel: 609-228-6898

Fax: 609-228-5909

E-mail: tech@MedChemExpress.com

Address: 1 Deer Park Dr, Suite Q, Monmouth Junction, NJ 08852, USA