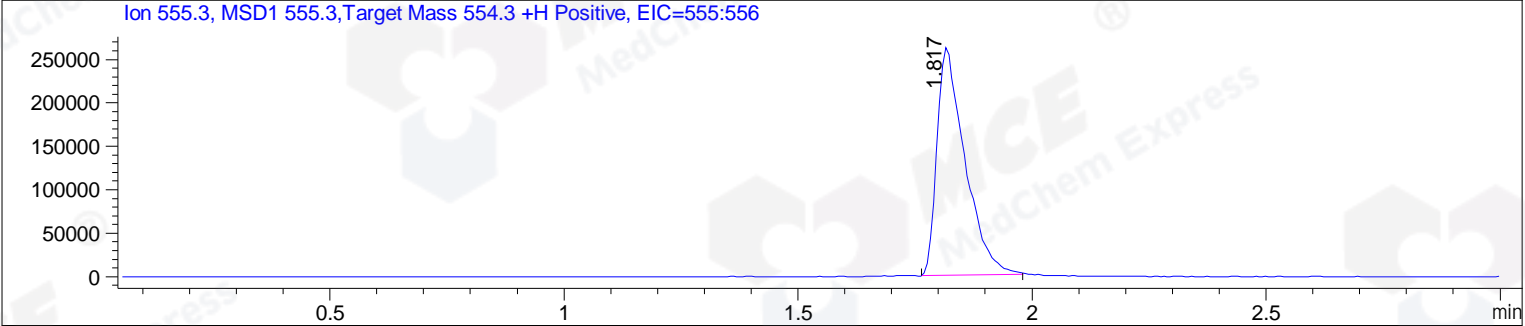
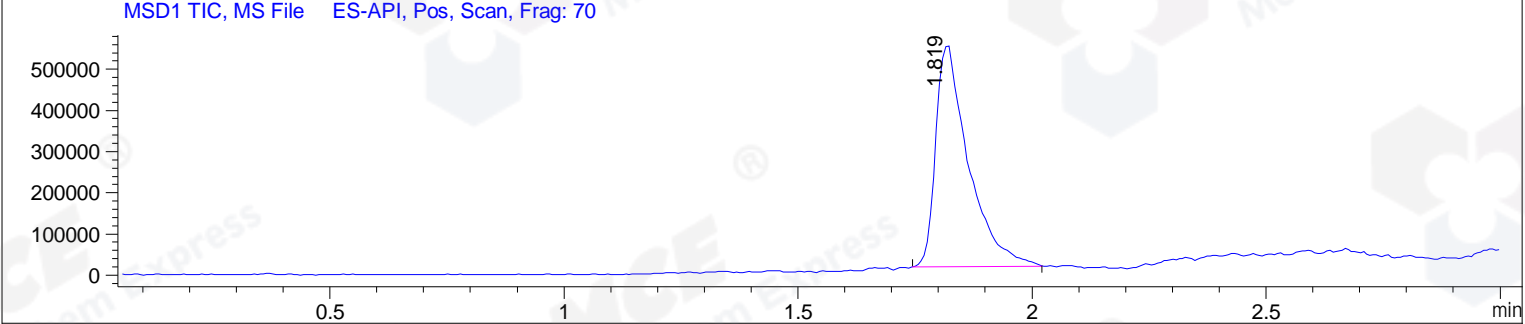
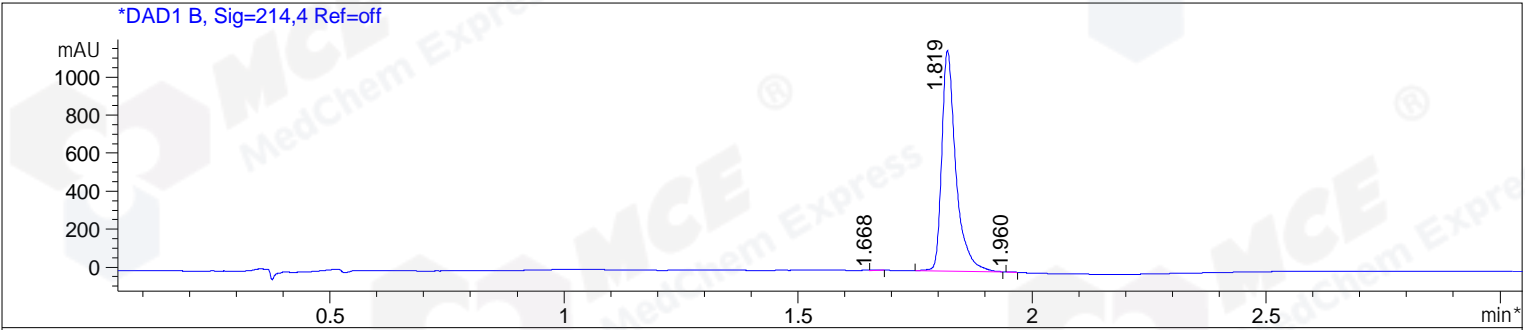


File ..M32\1\DATA\20170209\BIZ\BIZ2017-209-WJ3-1.D Tgt Mass (EZ): 554.30  
 Injection Date : 9 Feb 17 2:36 pm +0800 Seq. Line : 0  
 Sample Name : BIZ2017-209-WJ3-1 Location : P1-A-06  
 Acq. Operator : GZZ\_718 Inj : 1  
 Spec. Reported : MS Integration Inj Volume : 10 ul  
 Acq. Method : D:\Chem32\1\METHODS\1-POS-3MIN.M  
 Analysis Method : D:\CHEM32\1\METHODS\1-POS-3MIN-PROSRSS.M  
 Catalog No : HY-13821 Batch#23463 Easy-Access Method: '1-POS-3MIN' 554.30  
 Method Info : Mobile Phase: A: water(0.01%TFA) B:ACN(0.01%TFA)  
 Gradient: 5% to 95%B within 1.3 min  
 Flow Rate :1.8ml/min  
 Column :SunFire C18, 4.6\*50mm,3.5um A-RP-186  
 Oven Temperature : 45C



Integration Results for DAD1 B, Sig=214,4 Ref=off

| RetTim | Width | Area    | Height  | Area% | MS (+) |
|--------|-------|---------|---------|-------|--------|
| 1.67   | 0.02  | 1.19    | 0.87    | 0.05  | 595    |
| 1.82   | 0.03  | 2421.79 | 1159.82 | 99.89 | 555    |
| 1.96   | 0.02  | 1.49    | 1.32    | 0.06  | 577    |

Ret. Time: 1.82

<<<< POSITIVE SPECTRA >>>>

