

2',2'-Difluorodeoxyuridine-¹³C,¹⁵N₂

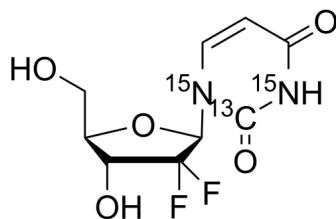
Cat. No.: HY-138253S
Batch No.: 391009
CAS No.: 1233921-75-9
Molecular Formula: C₈¹³CH₁₀F₂¹⁵N₂O₅

ANALYTICAL DATA

Theoretical: C(40.44%), H(3.77%), N(10.49%)

Result: C(40.38%), H(3.56%), N(10.56%)

Chemical Structure:



Caution: Product has not been fully validated for medical applications. For research use only.

Tel: 609-228-6898

Fax: 609-228-5909

E-mail: tech@MedChemExpress.com

Address: 1 Deer Park Dr, Suite Q, Monmouth Junction, NJ 08852, USA