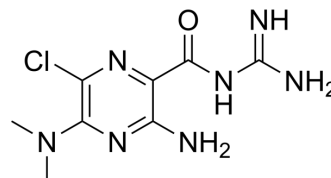


Dimethylamiloride

Cat. No.:	HY-138866		
CAS No.:	1214-79-5		
Molecular Formula:	C ₈ H ₁₂ ClN ₇ O		
Molecular Weight:	257.68		
Target:	Others		
Pathway:	Others		
Storage:	Powder	-20°C	3 years
		4°C	2 years
	In solvent	-80°C	6 months
		-20°C	1 month



SOLVENT & SOLUBILITY

In Vitro	DMSO : 100 mg/mL (388.08 mM; Need ultrasonic)				
		Solvent Concentration	Mass 1 mg	5 mg	10 mg
	Preparing Stock Solutions	1 mM	3.8808 mL	19.4039 mL	38.8078 mL
		5 mM	0.7762 mL	3.8808 mL	7.7616 mL
10 mM		0.3881 mL	1.9404 mL	3.8808 mL	
Please refer to the solubility information to select the appropriate solvent.					
In Vivo	<ol style="list-style-type: none"> Add each solvent one by one: 10% DMSO >> 40% PEG300 >> 5% Tween-80 >> 45% saline Solubility: 2.5 mg/mL (9.70 mM); Clear solution; Need ultrasonic Add each solvent one by one: 10% DMSO >> 90% (20% SBE-β-CD in saline) Solubility: 2.5 mg/mL (9.70 mM); Clear solution; Need ultrasonic Add each solvent one by one: 10% DMSO >> 90% corn oil Solubility: 2.5 mg/mL (9.70 mM); Clear solution; Need ultrasonic 				

BIOLOGICAL ACTIVITY

Description	Dimethylamiloride is a specific antiporter inhibitor ^[1] .
IC₅₀ & Target	Antiporter ^[1]

CUSTOMER VALIDATION

-
- J Dermatolog Treat. 2023 Jun 15.

See more customer validations on www.MedChemExpress.com

REFERENCES

[1]. Vilella S, et al. Angiotensin II stimulation of the basolateral located Na⁺/H⁺ antiporter in eel (*Anguilla anguilla*) enterocytes. J Mol Endocrinol. 1996 Feb;16(1):57-62.

Caution: Product has not been fully validated for medical applications. For research use only.

Tel: 609-228-6898

Fax: 609-228-5909

E-mail: tech@MedChemExpress.com

Address: 1 Deer Park Dr, Suite Q, Monmouth Junction, NJ 08852, USA