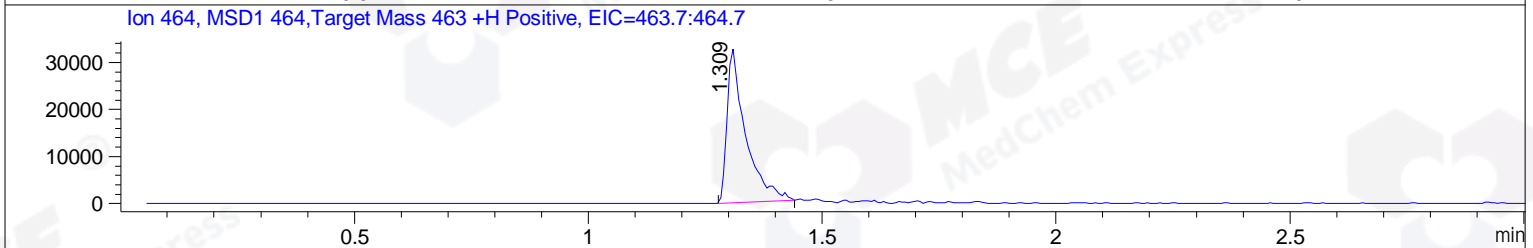
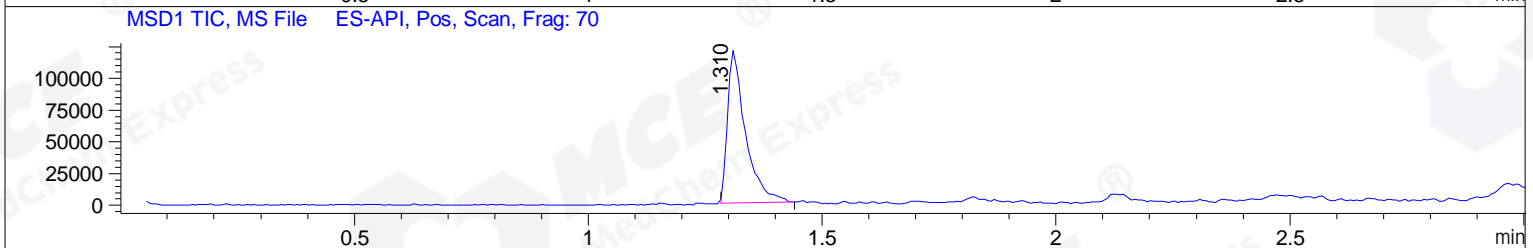
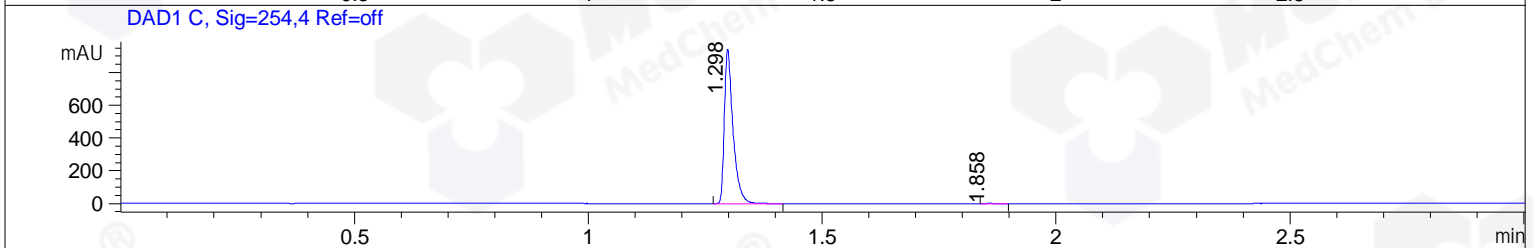
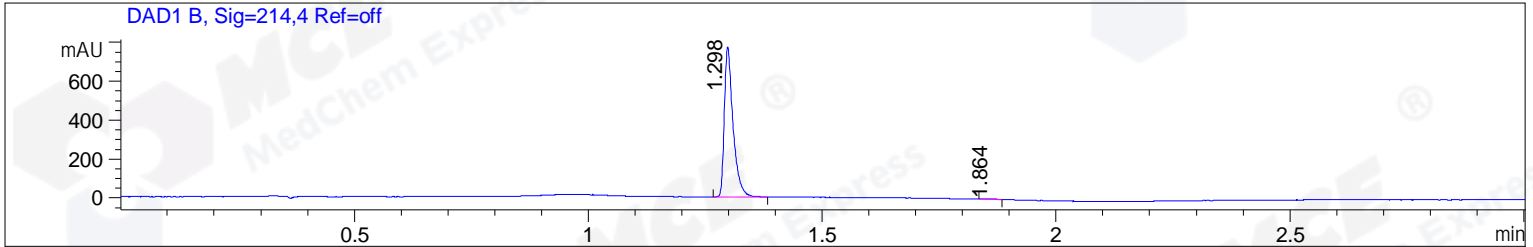


File ..\DATA\2019\20191219\792\CPK2019-D18-12295.D Tgt Mass (CHM):
 Injection Date : 19 Dec 19 1:11 pm +0800 Seq. Line : 54
 Sample Name : CPK2019-D18-12295 Location : P1-D-05
 Acq. Operator : ZJ_1432 Inj : 1
 Spec. Reported : MS Integration Inj Volume : 1 ul
 Acq. Method : D:\Chem32\1\data\2019\20191219\792\1-POS-3MIN.M
 Analysis Method : D:\CHEM32\1\DATA\2019\20191219\792\1-POS-3MIN.M
 Catalog No : HY-13902 Batch#12295
 Method Info : Mobile Phase: A: water(0.01%TFA) B:ACN(0.01%TFA)
 Gradient: 5% to 95%B within 1.3 min
 Flow Rate :1.8ml/min
 Column :SunFire C18, 4.6*50mm,3.5um A-RP-433
 Oven Temperature : 45



Integration Results for DAD1 B, Sig=214,4 Ref=off

RetTim	Width	Area	Height	Area%	MS (+)
1.30	0.02	999.75	772.57	99.64	464
1.86	0.03	3.65	2.41	0.36	ND

Integration Results for DAD1 C, Sig=254,4 Ref=off

RetTim	Width	Area	Height	Area%	MS (+)
1.30	0.02	1218.31	944.61	99.70	464
1.86	0.03	3.63	2.40	0.30	ND

Integration Results for MSD1 TIC, MS File

RetTim	Width	Area	Height	Area%	MS (+)
1.31	0.04	318798.84	120258.98	100.00	464

Ret. Time: 1.31

<<<< POSITIVE SPECTRA >>>>

ES-API Positive

