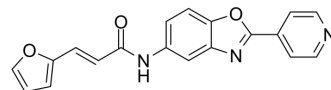


SW157765

Cat. No.:	HY-139047
CAS No.:	332063-87-3
Molecular Formula:	C ₁₉ H ₁₃ N ₃ O ₃
Molecular Weight:	331.32
Target:	GLUT
Pathway:	Membrane Transporter/Ion Channel
Storage:	Please store the product under the recommended conditions in the Certificate of Analysis.



BIOLOGICAL ACTIVITY

Description	SW157765 is a selective non-canonical glucose transporter GLUT8 (SLC2A8) inhibitor. KRAS/KEAP1 double mutant NSCLC cells are selectively sensitive to the SW157765, due to the convergent consequences of dual KRAS and NRF2 modulation of metabolic and xenobiotic gene regulatory programs ^{[1][2]} .
In Vitro	SW157765-sensitive NSCLC cell lines are also selectively sensitive to glucose deprivation and to GLUT8 depletion. SW157765 selectively inhibits fluorescent 2-deoxyglucose (2DG) uptake in SW157765-sensitive cells in a dose-dependent manner ^[1] . MCE has not independently confirmed the accuracy of these methods. They are for reference only.

REFERENCES

- [1]. Pine SR, et al. Identifying therapeutic vulnerabilities in lung cancer: application of a chemistry-first approach. *Transl Lung Cancer Res.* 2018;7(Suppl 3):S265-S269.
- [2]. McMillan EA, et al. Chemistry-First Approach for Nomination of Personalized Treatment in Lung Cancer. *Cell.* 2018;173(4):864-878.e29.

Caution: Product has not been fully validated for medical applications. For research use only.

Tel: 609-228-6898

Fax: 609-228-5909

E-mail: tech@MedChemExpress.com

Address: 1 Deer Park Dr, Suite Q, Monmouth Junction, NJ 08852, USA