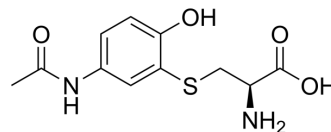


## Paracetamol-cysteine

Cat. No.:	HY-139093
CAS No.:	53446-10-9
Molecular Formula:	C <sub>11</sub> H <sub>14</sub> N <sub>2</sub> O <sub>4</sub> S
Molecular Weight:	270.3
Target:	Others
Pathway:	Others
Storage:	Please store the product under the recommended conditions in the Certificate of Analysis.



### BIOLOGICAL ACTIVITY

#### Description

Paracetamol-cysteine is a Paracetamol-cysteine Paracetamol protein adduct (PPA) and is formed when paracetamol is oxidized to the reactive metabolite N-acetyl-p-benzoquinoneimine (NAPQI)<sup>[1]</sup>.

### REFERENCES

[1]. Kennon Heard, et al. Paracetamol (acetaminophen) protein adduct concentrations during therapeutic dosing. Br J Clin Pharmacol. 2016 Mar;81(3):562-8.

**Caution: Product has not been fully validated for medical applications. For research use only.**

Tel: 609-228-6898

Fax: 609-228-5909

E-mail: tech@MedChemExpress.com

Address: 1 Deer Park Dr, Suite Q, Monmouth Junction, NJ 08852, USA