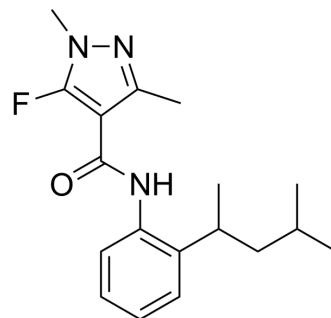


## Penflufen

Cat. No.:	HY-139161
CAS No.:	494793-67-8
Molecular Formula:	C <sub>18</sub> H <sub>24</sub> FN <sub>3</sub> O
Molecular Weight:	317.4
Target:	Fungal
Pathway:	Anti-infection
Storage:	Please store the product under the recommended conditions in the Certificate of Analysis.



### BIOLOGICAL ACTIVITY

#### Description

Penflufen is a highly efficient, broad-spectrum succinate dehydrogenase inhibitor (SDHI). Penflufen can be used as a fungicide and has broad bioactivity against many fungal diseases, including potato black scurf, wheat sharp eyespot, rice sheath blight, and root rot in peanut and other similar fungal diseases<sup>[1]</sup>.

### REFERENCES

[1]. Fang K, et al. Systematic evaluation of chiral fungicide penflufen for the bioactivity improvement and input reduction using alphafold2 models and transcriptome sequencing. J Hazard Mater. 2022 Oct 15;440:129729.

**Caution: Product has not been fully validated for medical applications. For research use only.**

Tel: 609-228-6898

Fax: 609-228-5909

E-mail: tech@MedChemExpress.com

Address: 1 Deer Park Dr, Suite Q, Monmouth Junction, NJ 08852, USA