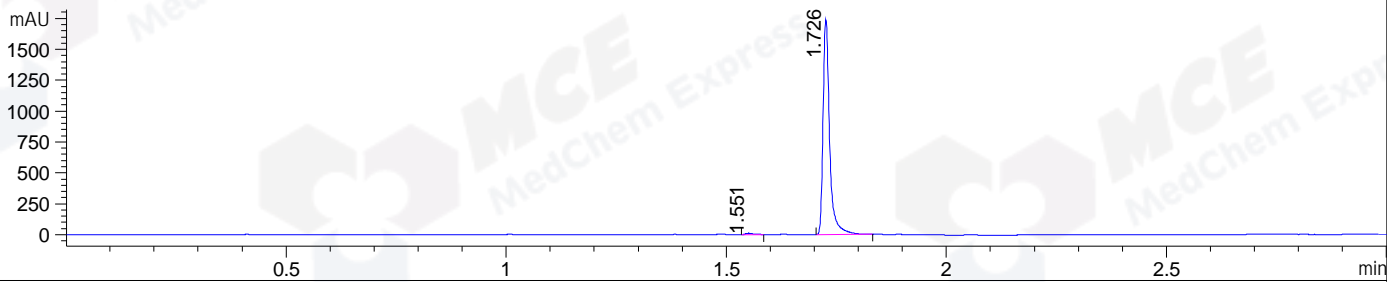
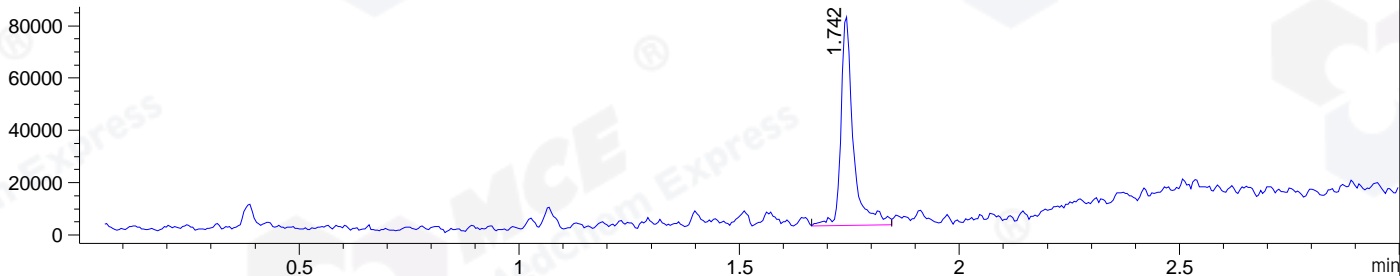


File ..DATA\2020\20201026\1136\CPK2020-023-09769.D Tgt Mass (CHM):  
Injection Date : 26 Oct 20 1:07 pm +0800 Seq. Line : 43  
Sample Name : CPK2020-023-09769 Location : P1-A-08  
Acq. Operator : zyj\_1547 Inj : 1  
Spec. Reported : MS Integration Inj Volume : 0.5 ul  
Acq. Method : D:\Chem32\1\data\2020\20201026\1136\1-POS-3MIN.M  
Analysis Method : D:\CHEM32\1\DATA\2020\20201026\1136\1-POS-3MIN.M  
CAS NO. : 83280-65-3  
Method Info : Mobile Phase: A: water(0.01%TFA) B:ACN(0.01%TFA)  
Gradient: 5% to 95%B within 1.3 min  
Flow Rate :1.8ml/min  
Column :SunFire C18, 4.6\*50mm,3.5um A-RP-698

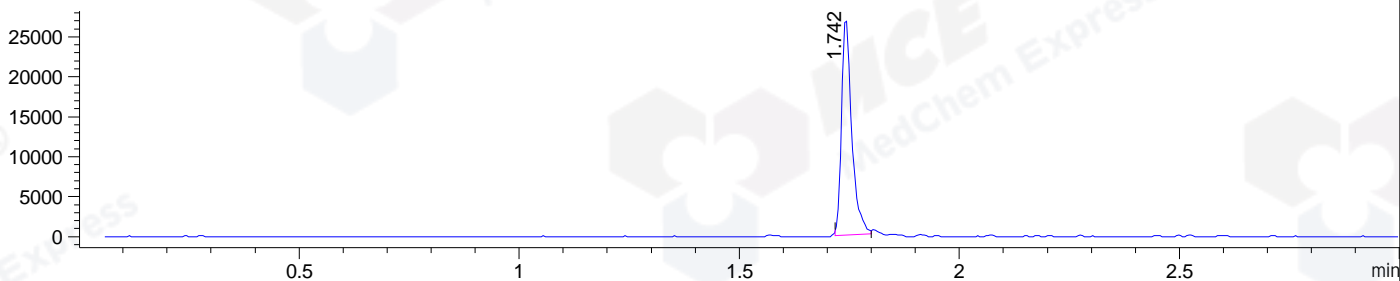
DAD1 C, Sig=254,4 Ref=off



MSD1 TIC, MS File ES-API, Pos, Scan, Frag: 70



Ion 241, MSD1 241, Target Mass 240 +H Positive, EIC=240.7:241.7



Integration Results for DAD1 C, Sig=254,4 Ref=off

| RetTim | Width | Area    | Height  | Area% | MS (+) |
|--------|-------|---------|---------|-------|--------|
| 1.55   | 0.02  | 13.26   | 11.31   | 0.73  | ND     |
| 1.73   | 0.02  | 1802.32 | 1737.10 | 99.27 | 241    |

Integration Results for MSD1 TIC, MS File

| RetTim | Width | Area      | Height   | Area%  | MS (+) |
|--------|-------|-----------|----------|--------|--------|
| 1.74   | 0.03  | 155655.31 | 80639.41 | 100.00 | 241    |

Ret. Time: 1.74

<<<< POSITIVE SPECTRA >>>>

ES-API Positive

