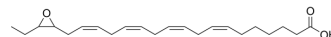


## (±)19(20)-EpDTE

Cat. No.:	HY-139267
CAS No.:	1359721-83-7
Molecular Formula:	C <sub>22</sub> H <sub>34</sub> O <sub>3</sub>
Molecular Weight:	346.5
Target:	Others
Pathway:	Others
Storage:	Please store the product under the recommended conditions in the Certificate of Analysis.



### BIOLOGICAL ACTIVITY

Description	(±)19(20)-EpDTE is an oxylipin and an oxidative metabolite of docosapentaenoic acid <sup>[1]</sup> .
-------------	--

### REFERENCES

[1]. Yanai Ryoji, et al. Cytochrome P450-generated metabolites derived from ω-3 fatty acids attenuate neovascularization. Proc Natl Acad Sci U S A. 2014 Jul 1;111(26):9603-8.

**Caution: Product has not been fully validated for medical applications. For research use only.**

Tel: 609-228-6898

Fax: 609-228-5909

E-mail: tech@MedChemExpress.com

Address: 1 Deer Park Dr, Suite Q, Monmouth Junction, NJ 08852, USA