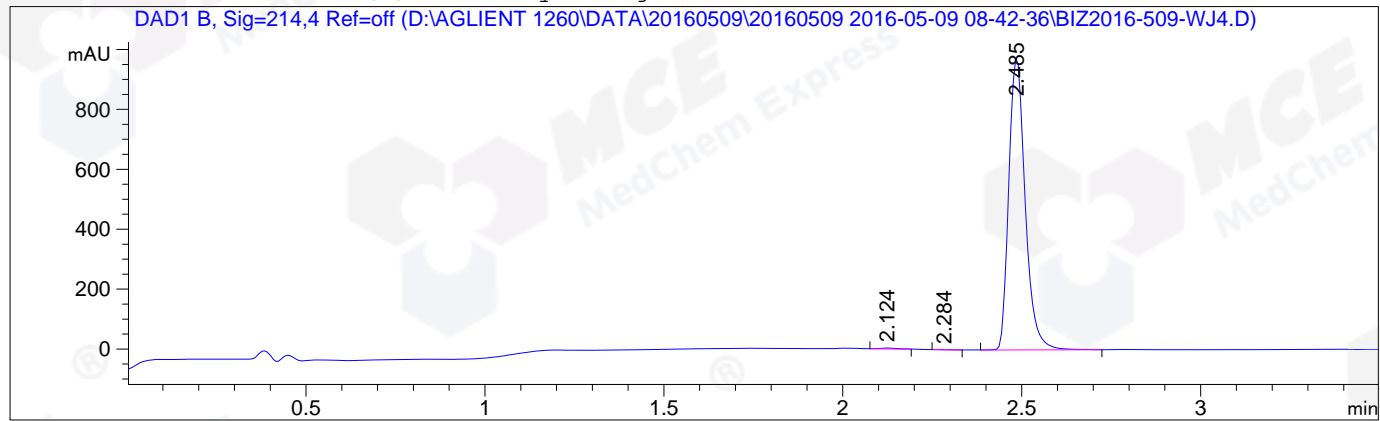


=====
Acq. Operator : Su Xiao Ying(LCMS-02) Seq. Line : 56
Acq. Instrument : HY-LCMS-02 Location : P1-B-03
Injection Date : 5/9/2016 2:03:23 PM Inj : 1
Inj Volume : 3.000 µl
Acq. Method : D:\AGLIENT 1260\DATA\20160509\20160509 2016-05-09 08-42-36\100-1000MS+3MIN-
1.5_(0.02%FA).M
Last changed : 5/9/2016 8:42:36 AM by Su Xiao Ying(LCMS-02)
Analysis Method : D:\AGLIENT 1260\DATA\20160509\20160509 2016-05-09 08-42-36\100-1000MS+3MIN-
1.5_(0.02%FA).M (Sequence Method)
Last changed : 5/9/2016 2:09:15 PM by Su Xiao Ying(LCMS-02)
(modified after loading)
Method Info : HY-365_5H01RS,M,A-RP-108, 210nm,23min
Catalog No : HY-13928 Batch#20371
A-RP-134

Additional Info : Peak(s) manually integrated



=====
Area Percent Report
=====

Sorted By : Signal
Multiplier : 1.0000
Dilution : 1.0000
Do not use Multiplier & Dilution Factor with ISTDs

Signal 1: DAD1 B, Sig=214,4 Ref=off

Peak #	RetTime [min]	Type	Width [min]	Area [mAU*s]	Height [mAU]	Area %
1	2.124	MM	0.0519	9.76318	3.13537	0.3132
2	2.284	MM	0.0471	1.82623	6.46719e-1	0.0586
3	2.485	MM	0.0527	3105.65015	982.74286	99.6282

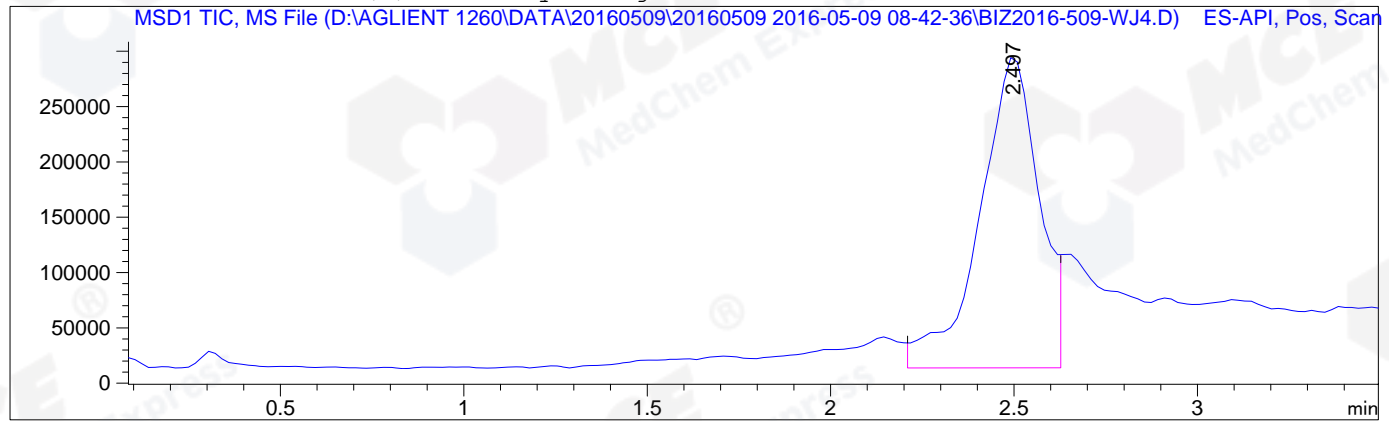
Totals : 3117.23956 986.52495

=====
*** End of Report ***
=====

=====

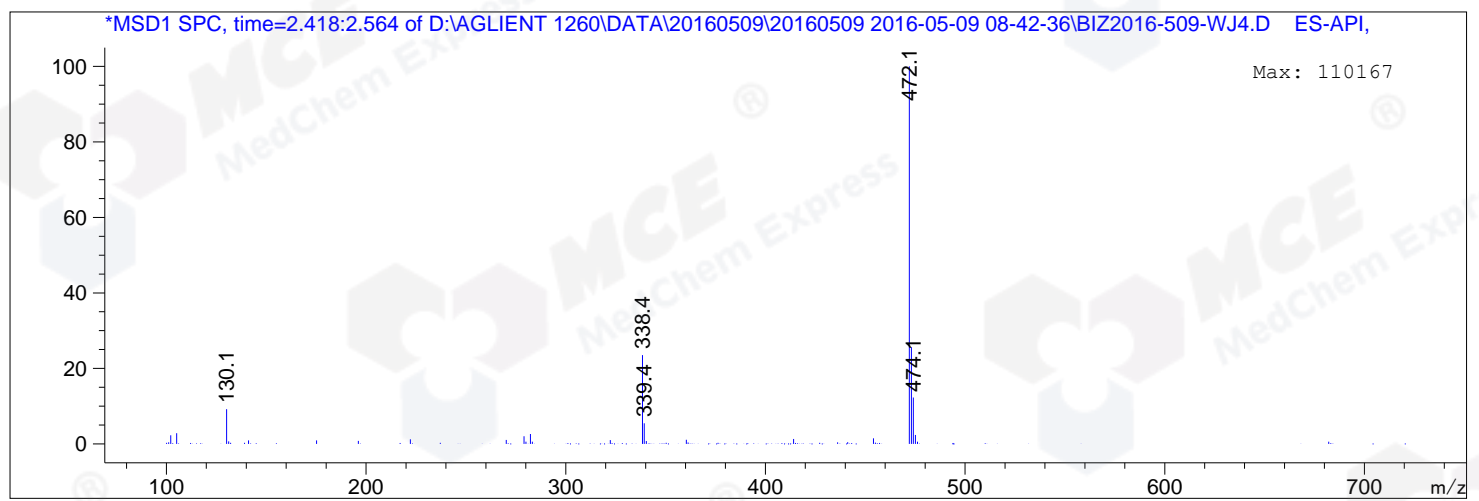
Acq. Operator	: Su Xiao Ying(LCMS-02)	Seq. Line	: 56
Acq. Instrument	: HY-LCMS-02	Location	: P1-B-03
Injection Date	: 5/9/2016 2:03:23 PM	Inj	: 1
		Inj Volume	: 3.000 µl
Acq. Method	: D:\AGLIENT 1260\DATA\20160509\20160509 2016-05-09 08-42-36\100-1000MS+3MIN-1.5_(0.02%FA).M		
Last changed	: 5/9/2016 8:42:36 AM by Su Xiao Ying(LCMS-02)		
Analysis Method	: D:\AGLIENT 1260\DATA\20160509\20160509 2016-05-09 08-42-36\100-1000MS+3MIN-1.5_(0.02%FA).M (Sequence Method)		
Last changed	: 5/9/2016 2:08:08 PM by Su Xiao Ying(LCMS-02) (modified after loading)		
Method Info	: HY-365_5H01RS,M,A-RP-108, 210nm,23min		
Catalog No	: HY-13928 Batch#20371 A-RP-134		

Additional Info : Peak(s) manually integrated



MS Signal: MSD1 TIC, MS File, ES-API, Pos, Scan, Frag: 50
Spectra averaged over upper half of peaks.
Noise Cutoff: 1000 counts.
Reportable Ion Abundance: > 10%.

Retention Time (MS)	MS Area	Mol. Weight or Ion
2.497	3153455	474.10 I
		473.10 I
		472.10 I
		338.40 I



*** End of Report ***