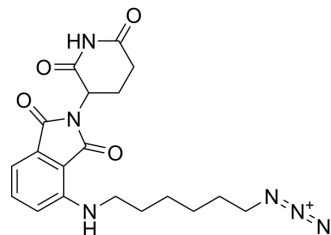


Pomalidomide 4'-alkylC6-azide

Cat. No.:	HY-139339
CAS No.:	2375555-72-7
Molecular Formula:	C ₁₉ H ₂₂ N ₆ O ₄
Molecular Weight:	398.42
Target:	Ligands for E3 Ligase
Pathway:	PROTAC
Storage:	Please store the product under the recommended conditions in the Certificate of Analysis.



BIOLOGICAL ACTIVITY

Description

Pomalidomide 4'-alkylC6-azide is the Pomalidomide (HY-123324)-based cereblon (CRBN) ligand used in the recruitment of CRBN protein. Pomalidomide 4'-alkylC6-azide can be connected to the ligand for protein by a linker to form PROTAC^[1].

REFERENCES

[1]. Liu H, et al. Construction of an IMiD-based azide library as a kit for PROTAC research. *Org Biomol Chem*. 2021 Jan 6;19(1):166-170.

Caution: Product has not been fully validated for medical applications. For research use only.

Tel: 609-228-6898

Fax: 609-228-5909

E-mail: tech@MedChemExpress.com

Address: 1 Deer Park Dr, Suite Q, Monmouth Junction, NJ 08852, USA