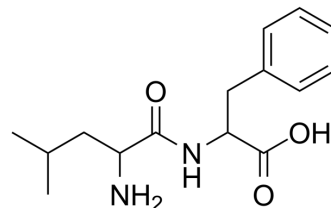


DL-Leucyl-DL-phenylalanine

Cat. No.:	HY-139440
CAS No.:	56217-82-4
Molecular Formula:	C ₁₅ H ₂₂ N ₂ O ₃
Molecular Weight:	278.35
Target:	Others
Pathway:	Others
Storage:	Please store the product under the recommended conditions in the Certificate of Analysis.



BIOLOGICAL ACTIVITY

Description	DL-Leucyl-DL-phenylalanine is a dipeptide and can be used as a substrate to detect two regions of dipeptidase staining on a gel in <i>Drosophila simulans</i> as well as in <i>Drosophila melanogaster</i> ^{[1][2]} .
In Vitro	DL-Leucyl-DL-phenylalanine is a dipeptide ^[1] . MCE has not independently confirmed the accuracy of these methods. They are for reference only.

REFERENCES

[1]. Ohnishi S., Comparative studies of allozyme loci in *Drosophila simulans* and *Drosophila melanogaster*. I. Three dipeptidase loci. *Biochem Genet.* 1981;19(1-2):75-85.

Caution: Product has not been fully validated for medical applications. For research use only.

Tel: 609-228-6898

Fax: 609-228-5909

E-mail: tech@MedChemExpress.com

Address: 1 Deer Park Dr, Suite Q, Monmouth Junction, NJ 08852, USA