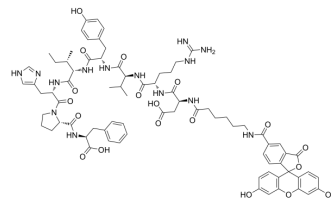


Angiotensin II human, FAM-labeled

Cat. No.:	HY-13948F1
Molecular Formula:	C ₇₇ H ₉₂ N ₁₄ O ₁₉
Molecular Weight:	1517.64
Sequence:	{FAM-Ahx}-Asp-Arg-Val-Tyr-Ile-His-Pro-Phe
Sequence Shortening:	{FAM-Ahx}-DRVYIHPF
Target:	Others
Pathway:	Others
Storage:	Sealed storage, away from moisture
	Powder -80°C 2 years
	-20°C 1 year



* In solvent : -80°C, 6 months; -20°C, 1 month (sealed storage, away from moisture)

SOLVENT & SOLUBILITY

In Vitro

DMSO : 100 mg/mL (65.89 mM; Need ultrasonic)

Preparing Stock Solutions	Solvent Concentration	Mass		
		1 mg	5 mg	10 mg
	1 mM	0.6589 mL	3.2946 mL	6.5892 mL
	5 mM	0.1318 mL	0.6589 mL	1.3178 mL
	10 mM	0.0659 mL	0.3295 mL	0.6589 mL

Please refer to the solubility information to select the appropriate solvent.

In Vivo

- Add each solvent one by one: 10% DMSO >> 40% PEG300 >> 5% Tween-80 >> 45% saline
Solubility: ≥ 2.5 mg/mL (1.65 mM); Clear solution
- Add each solvent one by one: 10% DMSO >> 90% (20% SBE-β-CD in saline)
Solubility: ≥ 2.5 mg/mL (1.65 mM); Clear solution

BIOLOGICAL ACTIVITY

Description

Angiotensin II human, FAM-labeled (Angiotensin II, FAM-labeled ; Ang II, FAM-labeled ; DRVYIHPF, FAM-labeled) is a biological active peptide. (FAM labeled HY-13948)

Caution: Product has not been fully validated for medical applications. For research use only.

Tel: 609-228-6898

Fax: 609-228-5909

E-mail: tech@MedChemExpress.com

Address: 1 Deer Park Dr, Suite Q, Monmouth Junction, NJ 08852, USA