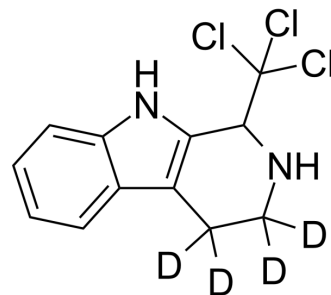


1-(Trichloromethyl)-1H,2H,3H,4H,9H-pyrido[3,4-b]indole-d4

| | |
|--------------------|-------------------------------------------------------------------------------------------|
| Cat. No.: | HY-139531S |
| CAS No.: | 1794886-07-9 |
| Molecular Formula: | C ₁₂ H ₇ D ₄ Cl ₃ N ₂ |
| Molecular Weight: | 293.61 |
| Storage: | Please store the product under the recommended conditions in the Certificate of Analysis. |



Caution: Product has not been fully validated for medical applications. For research use only.

Tel: 609-228-6898

Fax: 609-228-5909

E-mail: tech@MedChemExpress.com

Address: 1 Deer Park Dr, Suite Q, Monmouth Junction, NJ 08852, USA