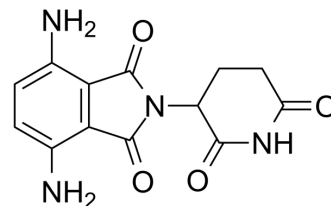


## Pomalidomide-7-NH<sub>2</sub>

Cat. No.:	HY-139550
CAS No.:	497146-96-0
Molecular Formula:	C <sub>13</sub> H <sub>12</sub> N <sub>4</sub> O <sub>4</sub>
Molecular Weight:	288.26
Target:	Ligands for E3 Ligase
Pathway:	PROTAC
Storage:	Please store the product under the recommended conditions in the Certificate of Analysis.



### BIOLOGICAL ACTIVITY

Description	Pomalidomide-7-NH <sub>2</sub> is the Pomalidomide-based cereblon ligand used in the recruitment of CRBN protein. Pomalidomide-7-NH <sub>2</sub> can be connected to the ligand for protein by a linker to form PROTACs <sup>[1]</sup> .
IC <sub>50</sub> & Target	Cereblon
In Vitro	PROTACs contain two different ligands connected by a linker; one is a ligand for an E3 ubiquitin ligase and the other is for the target protein. PROTACs exploit the intracellular ubiquitin-proteasome system to selectively degrade target proteins <sup>[1]</sup> . MCE has not independently confirmed the accuracy of these methods. They are for reference only.

### REFERENCES

[1]. Nalawansa DA, et al. PROTACs: An Emerging Therapeutic Modality in Precision Medicine. Cell Chem Biol. 2020;27(8):998-994.

**Caution: Product has not been fully validated for medical applications. For research use only.**

Tel: 609-228-6898

Fax: 609-228-5909

E-mail: tech@MedChemExpress.com

Address: 1 Deer Park Dr, Suite Q, Monmouth Junction, NJ 08852, USA