

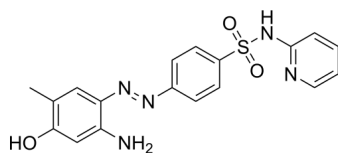
MS436

Cat. No.: HY-13959
 Batch No.: 38707
 CAS No.: 1395084-25-9
 Molecular Formula: C₁₈H₁₇N₅O₃S

ANALYTICAL DATA

Theoretical: C(56.38%)、H(4.47%)、N(18.27%)
 Result: C(55.27%)、H(4.79%)、N(18.09%)

Chemical Structure:



Caution: Product has not been fully validated for medical applications. For research use only.

Tel: 609-228-6898

Fax: 609-228-5909

E-mail: tech@MedChemExpress.com

Address: 1 Deer Park Dr, Suite Q, Monmouth Junction, NJ 08852, USA