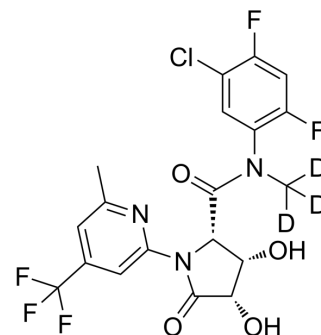


Polθ-IN-1-d₃

Cat. No.:	HY-139593S
CAS No.:	2598122-35-9
Molecular Formula:	C ₁₉ H ₁₂ D ₃ ClF ₅ N ₃ O ₄
Molecular Weight:	482.8
Target:	Isotope-Labeled Compounds
Pathway:	Others
Storage:	Please store the product under the recommended conditions in the Certificate of Analysis.



BIOLOGICAL ACTIVITY

Description

Polθ-IN-1-d₃ (example 1) is a deuterated Polθ inhibitor used for cancer study (extracted from patent WO2021028670)^[1].

REFERENCES

[1]. DEUTERATED COMPOUNDS FOR USE IN THE TREATMENT OF CANCER. Patent WO2021028670.

Caution: Product has not been fully validated for medical applications. For research use only.

Tel: 609-228-6898

Fax: 609-228-5909

E-mail: tech@MedChemExpress.com

Address: 1 Deer Park Dr, Suite Q, Monmouth Junction, NJ 08852, USA