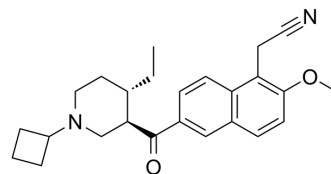


KDM2B-IN-3

Cat. No.:	HY-139600
CAS No.:	1966933-87-8
Molecular Formula:	C ₂₅ H ₃₀ N ₂ O ₂
Molecular Weight:	390.52
Target:	Histone Demethylase
Pathway:	Epigenetics
Storage:	Please store the product under the recommended conditions in the Certificate of Analysis.



BIOLOGICAL ACTIVITY

Description	KDM2B-IN-3 is a histone demethylase KDM2B inhibitor extracted from patent WO2016112284A1, compound 183c. KDM2B-IN-3 can be used for the research of cancer ^[1] .
IC ₅₀ & Target	histone demethylase KDM2B ^[1]

REFERENCES

[1]. Albrecht BK, et, al. (piperidin-3-yl)(naphthalen-2-yl)methanone derivatives and related compounds as inhibitors of the histone demethylase kdm2b for the treatment of cancer. WO2016112284A1.

Caution: Product has not been fully validated for medical applications. For research use only.

Tel: 609-228-6898

Fax: 609-228-5909

E-mail: tech@MedChemExpress.com

Address: 1 Deer Park Dr, Suite Q, Monmouth Junction, NJ 08852, USA