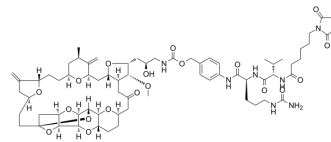


Mal-(CH₂)₅-Val-Cit-PAB-Eribulin

Cat. No.:	HY-139642
CAS No.:	2130869-21-3
Molecular Formula:	C ₆₉ H ₉₇ N ₇ O ₁₉
Molecular Weight:	1328.54
Target:	Drug-Linker Conjugates for ADC
Pathway:	Antibody-drug Conjugate/ADC Related
Storage:	4°C, protect from light, stored under nitrogen * In solvent : -80°C, 6 months; -20°C, 1 month (protect from light, stored under nitrogen)



BIOLOGICAL ACTIVITY

Description	Mal-(CH ₂) ₅ -Val-Cit-PAB-Eribulin is a drug-linker conjugate for ADC with potent antitumor activity by using the anti-microtubule agent, Eribulin, linked via linker Mal-(CH ₂) ₅ -Val-Cit-PAB ^[1] .
In Vitro	Eribulin (E7389) is a microtubule targeting agent that is used for the research of metastatic breast cancer. Eribulin inhibits the proliferation of cancer cells by binding microtubule proteins and microtubules ^[2] . MCE has not independently confirmed the accuracy of these methods. They are for reference only.

REFERENCES

[1]. Earl F Albone, et al. Eribulin-based antibody-drug conjugates and methods of use. Patent US20170252458A1.

[2]. Watanabe K, et, al. Low-dose eribulin reduces lung metastasis of osteosarcoma in vitro and in vivo. *Oncotarget*. 2019 Jan 4; 10(2): 161-174.

Caution: Product has not been fully validated for medical applications. For research use only.

Tel: 609-228-6898

Fax: 609-228-5909

E-mail: tech@MedChemExpress.com

Address: 1 Deer Park Dr, Suite Q, Monmouth Junction, NJ 08852, USA