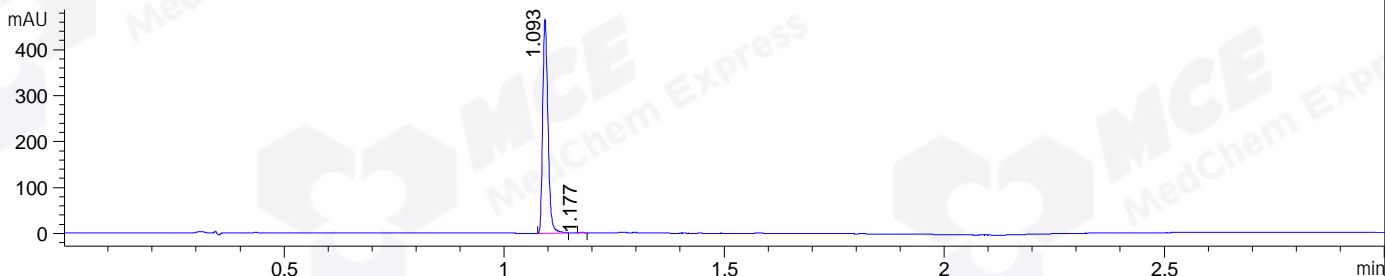
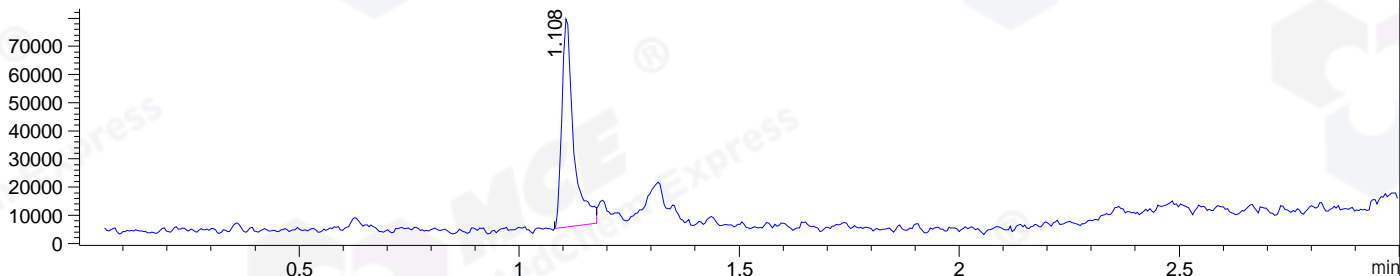


File ..\DATA\2020\20201125\1166\BIZ2020-N24-WLQ2.D Tgt Mass (CHM):
 Injection Date : 25 Nov 20 7:27 pm +0800 Seq. Line : 111
 Sample Name : BIZ2020-N24-WLQ2 Location : P1-C-01
 Acq. Operator : zyj_1547 Inj : 1
 Spec. Reported : MS Integration Inj Volume : 1 ul
 Acq. Method : D:\Chem32\1\data\2020\20201125\1166\1-POS-3MIN.M
 Analysis Method : D:\CHEM32\1\DATA\2020\20201125\1166\1-POS-3MIN.M
 CAS NO : 608512-97-6
 Method Info : Mobile Phase: A: water(0.01%TFA) B:ACN(0.01%TFA)
 Gradient: 5% to 95%B within 1.3 min
 Flow Rate :1.8ml/min
 Column :SunFire C18, 4.6*50mm,3.5um A-RP-698

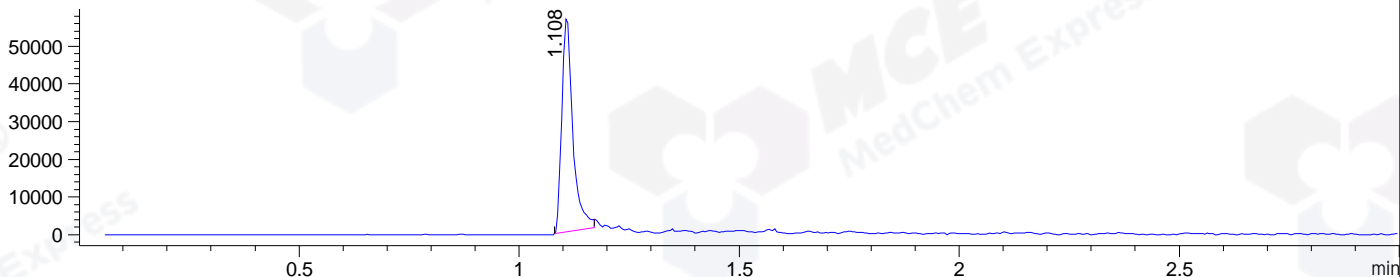
DAD1 C, Sig=254,4 Ref=off



MSD1 TIC, MS File ES-API, Pos, Scan, Frag: 70



Ion 269, MSD1 269, Target Mass 268 +H Positive, EIC=268.7:269.7



Integration Results for DAD1 C, Sig=254,4 Ref=off

RetTim	Width	Area	Height	Area%	MS(+)
1.09	0.01	387.93	464.82	99.78	269
1.18	0.01	0.84	1.26	0.22	269

Integration Results for MSD1 TIC, MS File

RetTim	Width	Area	Height	Area%	MS(+)
1.11	0.03	138563.33	74952.48	100.00	269

Ret. Time: 1.11

<<<< POSITIVE SPECTRA >>>>

ES-API Positive

