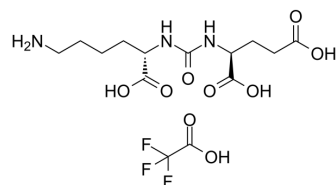


GCPII-IN-1 TFA

Cat. No.:	HY-139840A
CAS No.:	1269794-89-9
Molecular Formula:	C ₁₄ H ₂₂ F ₃ N ₃ O ₉
Molecular Weight:	433.33
Target:	Carboxypeptidase
Pathway:	Metabolic Enzyme/Protease
Storage:	4°C, sealed storage, away from moisture and light * In solvent : -80°C, 6 months; -20°C, 1 month (sealed storage, away from moisture and light)



SOLVENT & SOLUBILITY

In Vitro

H₂O : 160 mg/mL (369.23 mM; Need ultrasonic)

Concentration	Mass		
	1 mg	5 mg	10 mg
1 mM	2.3077 mL	11.5386 mL	23.0771 mL
5 mM	0.4615 mL	2.3077 mL	4.6154 mL
10 mM	0.2308 mL	1.1539 mL	2.3077 mL

Please refer to the solubility information to select the appropriate solvent.

BIOLOGICAL ACTIVITY

Description

GCPII-IN-1 TFA is a glutamate carboxypeptidase II (GCPII, or PSMA) inhibitor scaffold with a K_i of 44.3 nM^[1].

REFERENCES

[1]. Jan Tykvar, et al. Rational design of urea-based glutamate carboxypeptidase II (GCPII) inhibitors as versatile tools for specific drug targeting and delivery. Bioorg Med Chem. 2014 Aug 1;22(15):4099-108.

Caution: Product has not been fully validated for medical applications. For research use only.

Tel: 609-228-6898

Fax: 609-228-5909

E-mail: tech@MedChemExpress.com

Address: 1 Deer Park Dr, Suite Q, Monmouth Junction, NJ 08852, USA