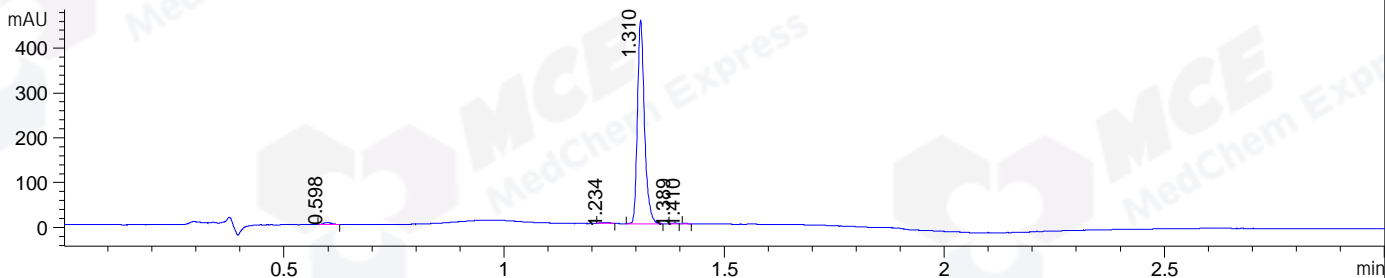
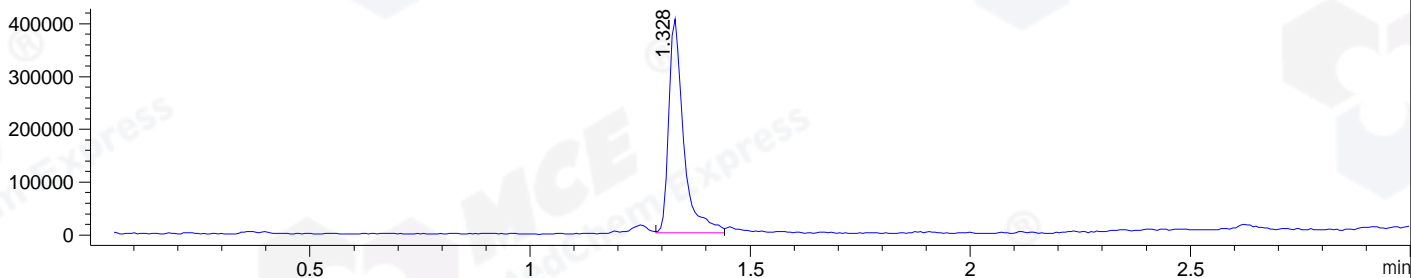


File ..DATA\2020\20200511\952\BIZ2020-509-WMX14-.D Tgt Mass (CHM):  
 Injection Date : 11 May 20 12:30 pm +0800 Seq. Line : 36  
 Sample Name : BIZ2020-509-WMX14 Location : P1-A-03  
 Acq. Operator : ZJ\_1432 Inj : 1  
 Spec. Reported : MS Integration Inj Volume : 5 ul  
 Acq. Method : D:\Chem32\1\data\2020\20200511\952\1-POS-3MIN.M  
 Analysis Method : D:\CHEM32\1\DATA\2020\20200511\952\1-POS-3MIN.M  
 Catalog No : HY-140889  
 Method Info : Mobile Phase: A: water(0.01%TFA) B:ACN(0.01%TFA)  
 Gradient: 5% to 95%B within 1.3 min  
 Flow Rate :1.8ml/min  
 Column :SunFire C18, 4.6\*50mm,3.5um A-RP-607  
 Oven Temperature : 45□

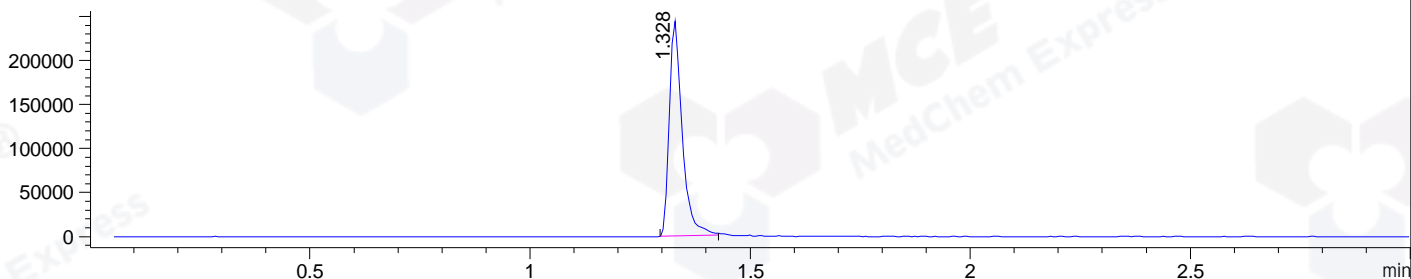
DAD1 B, Sig=214,4 Ref=off



MSD1 TIC, MS File ES-API, Pos, Scan, Frag: 70



Ion 589, MSD1 589, Target Mass 588 +H Positive, EIC=588.7:589.7



Integration Results for DAD1 B, Sig=214,4 Ref=off

RetTim	Width	Area	Height	Area%	MS (+)
0.60	0.02	5.94	4.88	1.15	ND
1.23	0.02	2.00	1.48	0.39	514
1.31	0.02	504.90	455.91	98.08	589
1.39	0.01	1.33	1.75	0.26	589
1.41	0.01	0.60	1.06	0.12	611

Integration Results for MSD1 TIC, MS File

RetTim	Width	Area	Height	Area%	MS (+)
1.33	0.04	954068.44	405491.34	100.00	589

Ret. Time: 1.33

<<<< POSITIVE SPECTRA >>>>

ES-API Positive

