

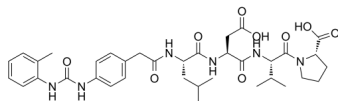
BIO-1211

Cat. No.: HY-14126
Batch No.: 114718
CAS No.: 187735-94-0
Molecular Formula: C₃₆H₄₈N₆O₉

ANALYTICAL DATA

Theoretical: C(-), H(-), N(-), Peptide Content(≥60.0%)
Result: C(57.73%), H(6.75%), N(11.02%), Peptide Content(92.90%)

Chemical Structure:



Caution: Product has not been fully validated for medical applications. For research use only.

Tel: 609-228-6898

Fax: 609-228-5909

E-mail: tech@MedChemExpress.com

Address: 1 Deer Park Dr, Suite Q, Monmouth Junction, NJ 08852, USA