

R121919

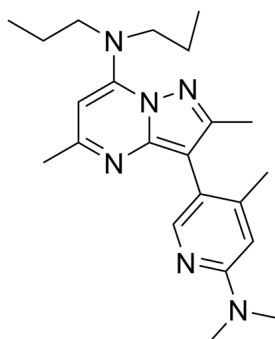
Cat. No.: HY-14127
Batch No.: 104383
CAS No.: 195055-03-9
Molecular Formula: C₂₂H₃₂N₆

ANALYTICAL DATA

Theoretical: C(69.44%), H(8.48%), N(22.09%)

Result: C(69.44%), H(8.54%), N(22.14%)

Chemical Structure:



Caution: Product has not been fully validated for medical applications. For research use only.

Tel: 609-228-6898

Fax: 609-228-5909

E-mail: tech@MedChemExpress.com

Address: 1 Deer Park Dr, Suite Q, Monmouth Junction, NJ 08852, USA