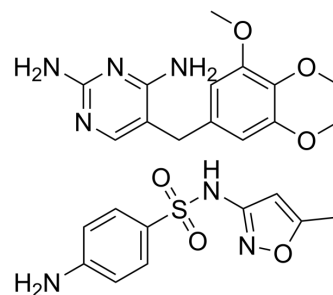


## Cotrimoxazole (Trimethoprim/sulfamethoxazole 1:19)

<b>Cat. No.:</b>	HY-141619A		
<b>CAS No.:</b>	8064-90-2		
<b>Molecular Formula:</b>	C <sub>24</sub> H <sub>29</sub> N <sub>7</sub> O <sub>6</sub> S		
<b>Molecular Weight:</b>	543.6		
<b>Target:</b>	Bacterial		
<b>Pathway:</b>	Anti-infection		
<b>Storage:</b>	Powder	-20°C	3 years
		4°C	2 years
	In solvent	-80°C	6 months
		-20°C	1 month



### SOLVENT & SOLUBILITY

#### In Vitro

DMSO : 100 mg/mL (183.96 mM; Need ultrasonic)

Concentration	Solvent	Mass	1 mg	5 mg	10 mg
			1 mg	5 mg	10 mg
Preparing Stock Solutions	1 mM		1.8396 mL	9.1979 mL	18.3959 mL
	5 mM		0.3679 mL	1.8396 mL	3.6792 mL
	10 mM		0.1840 mL	0.9198 mL	1.8396 mL

Please refer to the solubility information to select the appropriate solvent.

#### In Vivo

- Add each solvent one by one: 10% DMSO >> 40% PEG300 >> 5% Tween-80 >> 45% saline  
Solubility: ≥ 2.5 mg/mL (4.60 mM); Clear solution
- Add each solvent one by one: 10% DMSO >> 90% (20% SBE-β-CD in saline)  
Solubility: ≥ 2.5 mg/mL (4.60 mM); Clear solution
- Add each solvent one by one: 10% DMSO >> 90% corn oil  
Solubility: ≥ 2.5 mg/mL (4.60 mM); Clear solution

### BIOLOGICAL ACTIVITY

#### Description

Cotrimoxazole (Trimethoprim/sulfamethoxazole 1:19), an antimicrobial agent, is a Trimethoprim and Sulfamethoxazole mixture. The ratio of Trimethoprim to Sulfamethoxazole in the combination mixture is 1 : 19<sup>[1]</sup>.

### REFERENCES

---

[1]. Tsi-Shu Huang, et al. Susceptibility of Mycobacterium tuberculosis to sulfamethoxazole, trimethoprim and their combination over a 12 year period in Taiwan. J Antimicrob Chemother. 2012 Mar;67(3):633-7.

---

**Caution: Product has not been fully validated for medical applications. For research use only.**

Tel: 609-228-6898

Fax: 609-228-5909

E-mail: [tech@MedChemExpress.com](mailto:tech@MedChemExpress.com)

Address: 1 Deer Park Dr, Suite Q, Monmouth Junction, NJ 08852, USA