

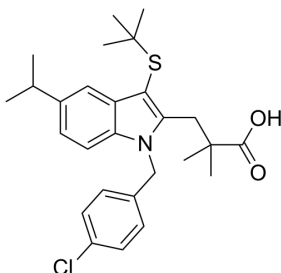
MK-886

Cat. No.: HY-14166
 CAS No.: 118414-82-7
 Batch No.: 250574
 Chemical Name: 1H-Indole-2-propanoic acid, 1-[(4-chlorophenyl)methyl]-3-[(1,1-dimethylethyl)thio]- α,α -dimethyl-5-(1-methylethyl)-

PHYSICAL AND CHEMICAL PROPERTIES

Molecular Formula: $C_{27}H_{34}ClNO_2S$
 Molecular Weight: 472.08
 Storage: Powder -20°C 3 years
 4°C 2 years
 In solvent -80°C 1 year
 -20°C 6 months

Chemical Structure:



ANALYTICAL DATA

Appearance: White to off-white (Solid)
 1H NMR Spectrum: Consistent with structure
 LCMS: Consistent with structure
 Purity (LCMS): 99.77%
 Conclusion: The product has been tested and complies with the given specifications.

Caution: Product has not been fully validated for medical applications. For research use only.

Tel: 609-228-6898

Fax: 609-228-5909

E-mail: tech@MedChemExpress.com

Address: 1 Deer Park Dr, Suite Q, Monmouth Junction, NJ 08852, USA