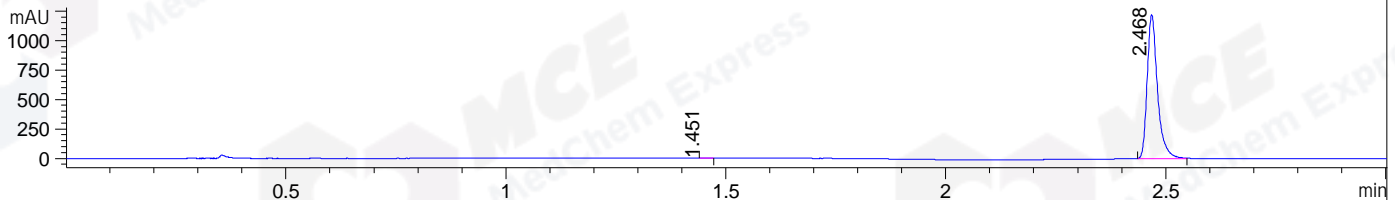
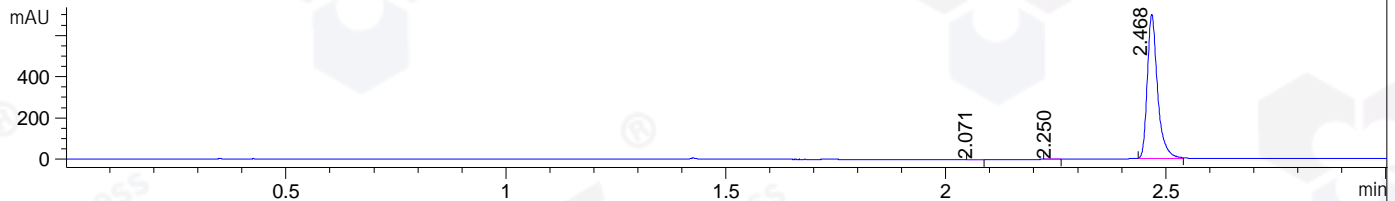


File ..1\DATA\2019\20190612\587\BIZ2019-611-WYQ7.D Tgt Mass (CHM):
Injection Date : 12 Jun 19 12:17 pm +0800 Seq. Line : 43
Sample Name : BIZ2019-611-WYQ7 Location : P1-D-02
Acq. Operator : ZJ_1432 Inj : 1
Spec. Reported : MS Integration Inj Volume : 1 ul
Acq. Method : D:\Chem32\1\data\2019\20190612\587\1-POS-3MIN.M
Analysis Method : D:\CHEM32\1\DATA\2019\20190612\587\1-POS-3MIN.M
Catalog No : HY-14171 Batch#42032
Method Info : Mobile Phase: A: water(0.01%TFA) B:ACN(0.01%TFA)
Gradient: 5% to 95%B within 1.3 min
Flow Rate :1.8ml/min
Column :SunFire C18, 4.6*50mm,3.5um A-RP-433
Oven Temperature : 45

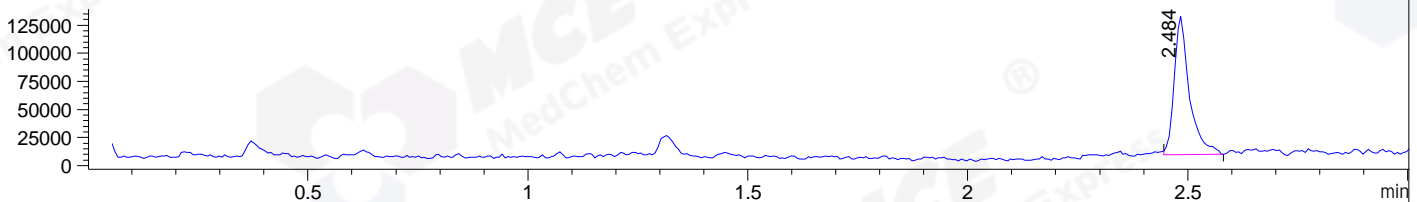
DAD1 B, Sig=214,4 Ref=off



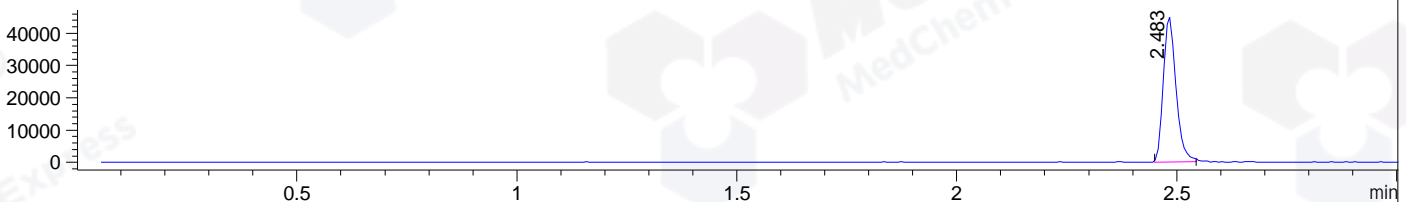
DAD1 C, Sig=254,4 Ref=off



MSD1 TIC, MS File ES-API, Pos, Scan, Frag: 70



Ion 349.2, MSD1 349.2, Target Mass 348.2 +H Positive, EIC=348.9:349.9



Integration Results for DAD1 B, Sig=214,4 Ref=off

RetTim	Width	Area	Height	Area%	MS (+)
1.45	0.02	2.04	1.67	0.10	ND
2.47	0.02	2000.16	1222.93	99.90	349

Integration Results for DAD1 C, Sig=254,4 Ref=off

RetTim	Width	Area	Height	Area%	MS (+)
2.07	0.01	0.68	0.79	0.06	ND
2.25	0.02	0.52	0.43	0.05	ND
2.47	0.02	1137.47	700.16	99.89	349

Integration Results for MSD1 TIC, MS File

RetTim	Width	Area	Height	Area%	MS (+)
2.48	0.04	297700.66	123610.64	100.00	349

Ret. Time: 2.48

<<<< POSITIVE SPECTRA >>>>

ES-API Positive

