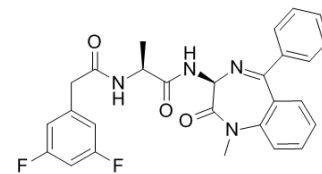


Compound E

Cat. No.:	HY-14176		
CAS No.:	209986-17-4		
Molecular Formula:	C ₂₇ H ₂₄ F ₂ N ₄ O ₃		
Molecular Weight:	490.5		
Target:	γ-secretase		
Pathway:	Neuronal Signaling; Stem Cell/Wnt		
Storage:	Powder	-20°C	3 years
	In solvent	-80°C	6 months
		-20°C	1 month



BIOLOGICAL ACTIVITY

Description	Compound E is a γ-secretase inhibitor. Compound E blocks β-amyloid(40), β-amyloid(42), and Notch γ-secretase cleavage with IC ₅₀ s of 0.24, 0.37, 0.32 nM, respectively.
IC ₅₀ & Target	IC ₅₀ : 0.24 nM (β-amyloid(40)), 0.37 nM (β-amyloid(42)), 0.24 nM (Notch) ^[1]
In Vitro	Compound E reduces the proliferation of T47D, and MCF-7 cell lines by less than 50% at a concentration of 50 μM ^[1] .

PROTOCOL

Cell Assay ^[1]	The breast cancer cell lines MDA-MB-231, T47D, and MCF-7 are treated with Compound E at concentrations in the range 0.01-50 μM for 48 h and their viability is determined using a Coulter counter ^[1] . MCE has not independently confirmed the accuracy of these methods. They are for reference only.
---------------------------	---

REFERENCES

- [1]. Beher D, et al. Pharmacological knock-down of the presenilin 1 heterodimer by a novel gamma -secretase inhibitor: implications for presenilin biology. J Biol Chem. 2001 Nov 30;276(48):45394-402.
- [2]. Rasul S, et al. Inhibition of gamma-secretase induces G2/M arrest and triggers apoptosis in breast cancer cells. Br J Cancer. 2009 Jun 16;100(12):1879-88.

Caution: Product has not been fully validated for medical applications. For research use only.

Tel: 609-228-6898

Fax: 609-228-5909

E-mail: tech@MedChemExpress.com

Address: 1 Deer Park Dr, Suite Q, Monmouth Junction, NJ 08852, USA