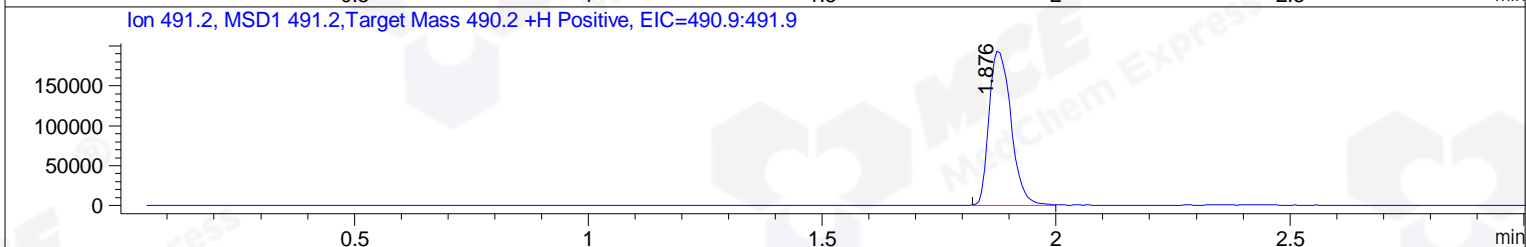
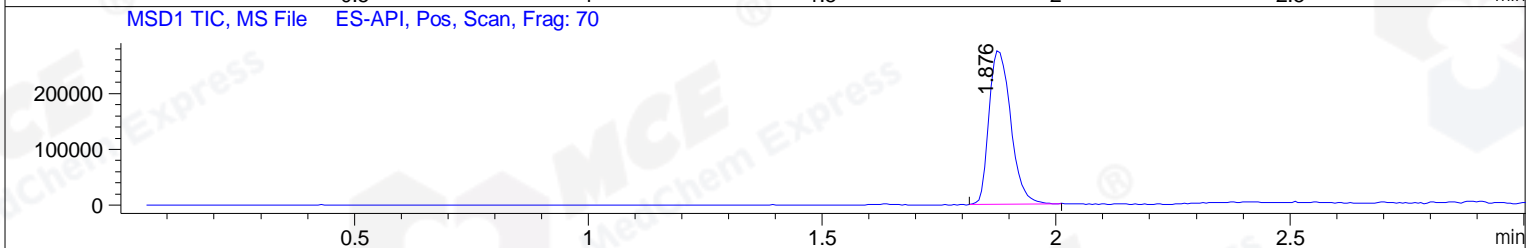
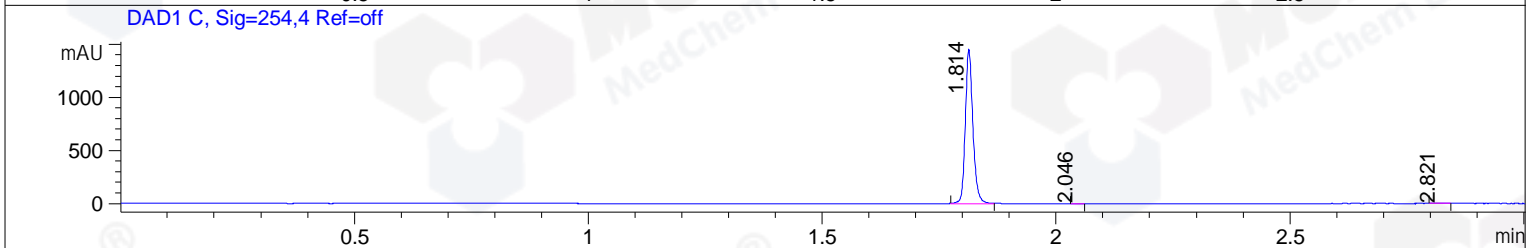
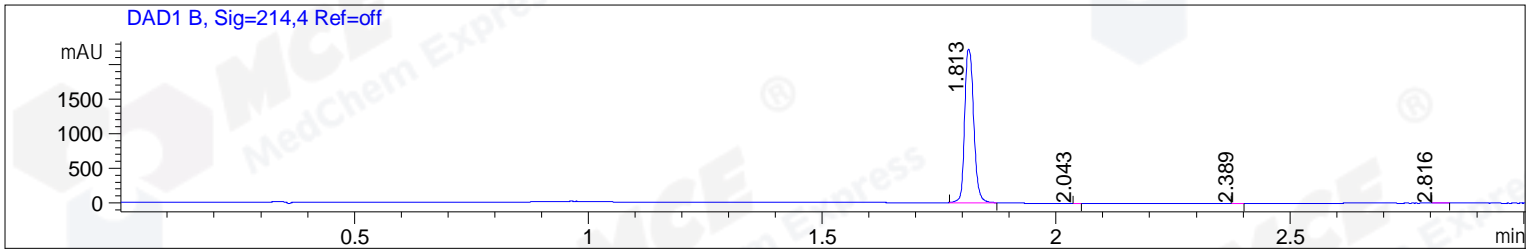


File ..1\DATA\2019\20190117\552\BIZ2019-116-CXL2.D Tgt Mass (CHM):  
 Injection Date : 17 Jan 19 11:47 am +0800 Seq. Line : 30  
 Sample Name : BIZ2019-116-CXL2 Location : P2-D-02  
 Acq. Operator : LQ\_1052 Inj : 1  
 Spec. Reported : MS Integration Inj Volume : 1 ul  
 Acq. Method : D:\Chem32\1\data\2019\20190117\552\1-POS-3MIN-1.M  
 Analysis Method : D:\CHEM32\1\DATA\2019\20190117\552\1-POS-3MIN-1.M  
 Catalog No : HY-14176 Batch#36997  
 Method Info : Mobile Phase: A: water(0.01%TFA) B:ACN(0.01%TFA)  
 Gradient: 5% to 95%B within 1.3 min  
 Flow Rate :1.8ml/min  
 Column :SunFire C18, 4.6\*50mm,3.5um A-RP-314  
 Oven Temperature : 45



Integration Results for DAD1 B, Sig=214,4 Ref=off

RetTim	Width	Area	Height	Area%	MS (+)
1.81	0.02	3000.60	2227.30	99.87	491
2.04	0.01	1.10	1.47	0.04	ND
2.39	0.02	1.00	1.06	0.03	ND
2.82	0.03	1.72	1.14	0.06	ND

Integration Results for DAD1 C, Sig=254,4 Ref=off

RetTim	Width	Area	Height	Area%	MS (+)
1.81	0.02	1640.91	1454.11	99.91	491
2.05	0.02	0.72	0.67	0.04	ND
2.82	0.02	0.82	0.57	0.05	ND

Integration Results for MSD1 TIC, MS File

RetTim	Width	Area	Height	Area%	MS (+)
1.88	0.05	888207.44	275873.22	100.00	491

Ret. Time: 1.88

<<<< POSITIVE SPECTRA >>>>

ES-API Positive

