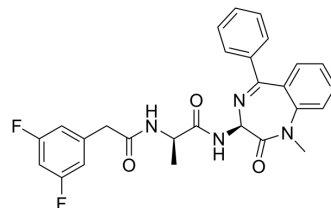


## (1R,3S)-Compound E

Cat. No.:	HY-14176A
CAS No.:	504428-17-5
Molecular Formula:	C <sub>27</sub> H <sub>24</sub> F <sub>2</sub> N <sub>4</sub> O <sub>3</sub>
Molecular Weight:	490.5
Target:	Others
Pathway:	Others
Storage:	-20°C, protect from light * In solvent : -80°C, 6 months; -20°C, 1 month (protect from light)



### SOLVENT & SOLUBILITY

#### In Vitro

DMSO : ≥ 50 mg/mL (101.94 mM)

\* "≥" means soluble, but saturation unknown.

Preparing Stock Solutions	Solvent		Mass		
	Concentration		1 mg	5 mg	10 mg
	1 mM		2.0387 mL	10.1937 mL	20.3874 mL
	5 mM		0.4077 mL	2.0387 mL	4.0775 mL
	10 mM		0.2039 mL	1.0194 mL	2.0387 mL

Please refer to the solubility information to select the appropriate solvent.

### BIOLOGICAL ACTIVITY

#### Description

(1R,3S)-Compound E is the isomer of Compound E (HY-14176), and can be used as an experimental control. Compound E is a  $\gamma$ -secretase inhibitor. Compound E blocks  $\beta$ -amyloid(40),  $\beta$ -amyloid(42), and Notch  $\gamma$ -secretase cleavage with IC<sub>50</sub>s of 0.24, 0.37, 0.32 nM, respectively.

### REFERENCES

[1]. Behr D, et al. Pharmacological knock-down of the presenilin 1 heterodimer by a novel gamma -secretase inhibitor: implications for presenilin biology. J Biol Chem. 2001 Nov 30;276(48):45394-402.

[2]. Rasul S, et al. Inhibition of gamma-secretase induces G2/M arrest and triggers apoptosis in breast cancer cells. Br J Cancer. 2009 Jun 16;100(12):1879-88.

---

**Caution: Product has not been fully validated for medical applications. For research use only.**

Tel: 609-228-6898

Fax: 609-228-5909

E-mail: [tech@MedChemExpress.com](mailto:tech@MedChemExpress.com)

Address: 1 Deer Park Dr, Suite Q, Monmouth Junction, NJ 08852, USA