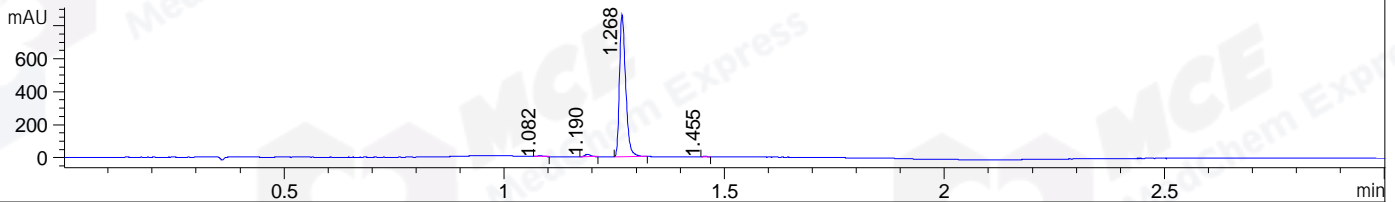
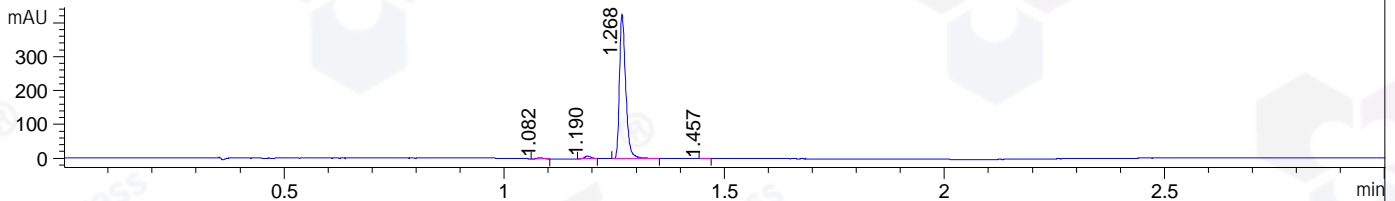


File ..\DATA\2019\20191115\761\CPK2019-N14-11326.D Tgt Mass (CHM):
Injection Date : 15 Nov 19 11:08 am +0800 Seq. Line : 30
Sample Name : CPK2019-N14-11326 Location : P1-A-07
Acq. Operator : ZJ_1432 Inj : 1
Spec. Reported : MS Integration Inj Volume : 1 ul
Acq. Method : D:\Chem32\1\data\2019\20191115\761\1-POS-3MIN.M
Analysis Method : D:\CHEM32\1\DATA\2019\20191115\761\1-POS-3MIN.M
Catalog No : HY-14177 Batch# 11326
Method Info : Mobile Phase: A: water(0.01%TFA) B:ACN(0.01%TFA)
Gradient: 5% to 95%B within 1.3 min
Flow Rate :1.8ml/min
Column :SunFire C18, 4.6*50mm,3.5um A-RP-433
Oven Temperature : 45□

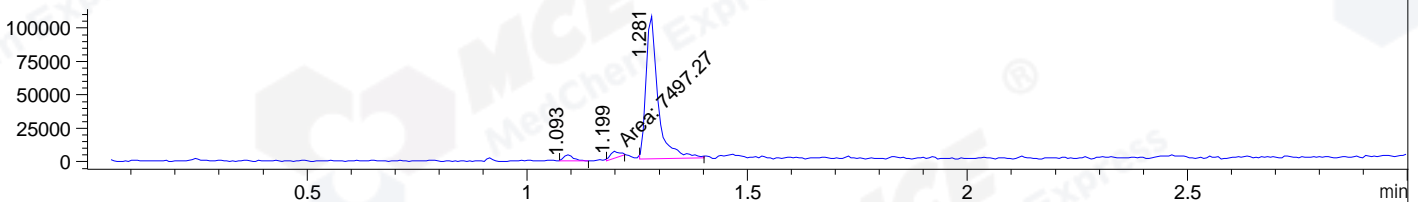
DAD1 B, Sig=214,4 Ref=off



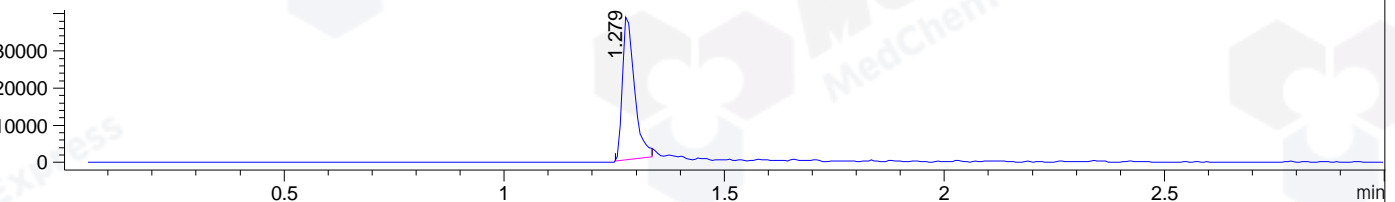
DAD1 C, Sig=254,4 Ref=off



MSD1 TIC, MS File ES-API, Pos, Scan, Frag: 70



Ion 479, MSD1 479, Target Mass 478 +H Positive, EIC=478.7:479.7



Integration Results for DAD1 B, Sig=214,4 Ref=off

RetTim	Width	Area	Height	Area%	MS (+)
1.08	0.01	3.70	4.53	0.43	469
1.19	0.01	11.50	13.39	1.33	470
1.27	0.02	847.76	863.39	98.05	479
1.46	0.01	1.68	2.26	0.19	ND

Integration Results for DAD1 C, Sig=254,4 Ref=off

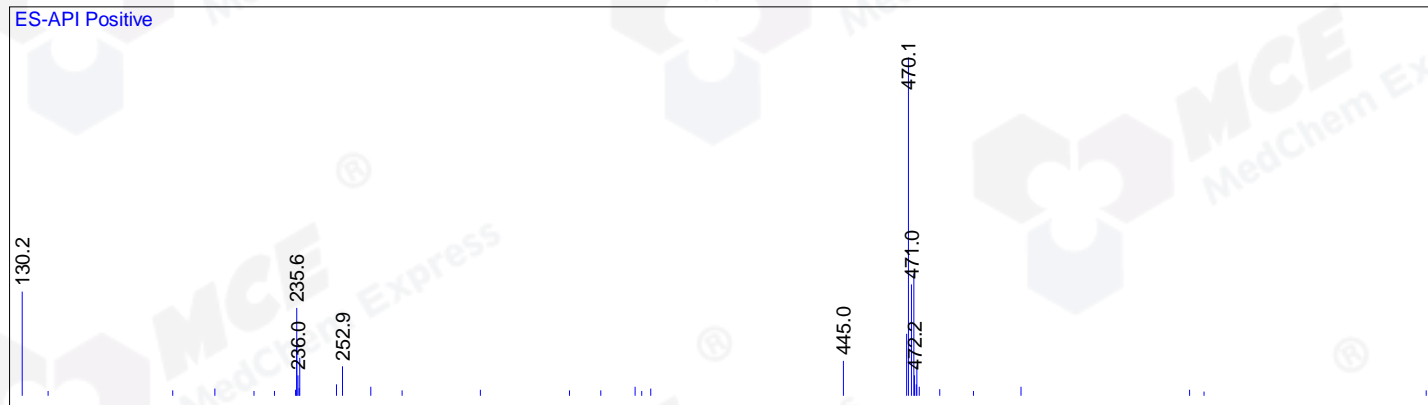
RetTim	Width	Area	Height	Area%	MS (+)
1.08	0.01	2.30	2.67	0.53	ND
1.19	0.01	5.39	6.56	1.25	470
1.27	0.02	421.32	426.99	98.03	479
1.46	0.01	0.78	0.95	0.18	ND

Integration Results for MSD1 TIC, MS File

RetTim	Width	Area	Height	Area%	MS (+)
1.09	0.02	6506.80	4406.39	2.98	ND

1.20	0.02	7497.27	5940.52	3.44	470
1.28	0.03	204187.75	108184.77	93.58	479

Ret. Time: 1.20



Ret. Time: 1.28

