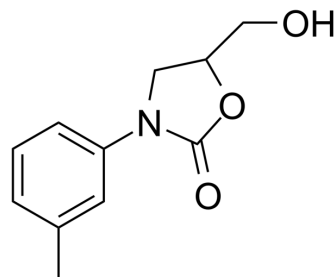


Toloxatone

Cat. No.:	HY-14196
CAS No.:	29218-27-7
Molecular Formula:	C ₁₁ H ₁₃ NO ₃
Molecular Weight:	207.23
Target:	Monoamine Oxidase
Pathway:	Neuronal Signaling
Storage:	-20°C, protect from light * In solvent : -80°C, 6 months; -20°C, 1 month (protect from light)



SOLVENT & SOLUBILITY

In Vitro	DMSO : 125 mg/mL (603.19 mM; Need ultrasonic)				
		Solvent Concentration	Mass 1 mg	5 mg	10 mg
	Preparing Stock Solutions	1 mM	4.8256 mL	24.1278 mL	48.2556 mL
		5 mM	0.9651 mL	4.8256 mL	9.6511 mL
		10 mM	0.4826 mL	2.4128 mL	4.8256 mL
Please refer to the solubility information to select the appropriate solvent.					
In Vivo	1. Add each solvent one by one: 10% DMSO >> 40% PEG300 >> 5% Tween-80 >> 45% saline Solubility: ≥ 2.08 mg/mL (10.04 mM); Clear solution				
	2. Add each solvent one by one: 10% DMSO >> 90% (20% SBE-β-CD in saline) Solubility: ≥ 2.08 mg/mL (10.04 mM); Clear solution				
	3. Add each solvent one by one: 10% DMSO >> 90% corn oil Solubility: ≥ 2.08 mg/mL (10.04 mM); Clear solution				

BIOLOGICAL ACTIVITY

Description	Toloxatone (MD 69276) is a reversible monoamine oxidase A (MAO _A) inhibitor ^[1] . Antidepressant ^[1] .
IC ₅₀ & Target	MAO _A ^[1]

REFERENCES

[1]. FMoureau, et al. A reversible monoamine oxidase inhibitor, tolloxatone: spectrophotometric and molecular orbital studies of the interaction with flavin adenine

Caution: Product has not been fully validated for medical applications. For research use only.

Tel: 609-228-6898

Fax: 609-228-5909

E-mail: tech@MedChemExpress.com

Address: 1 Deer Park Dr, Suite Q, Monmouth Junction, NJ 08852, USA