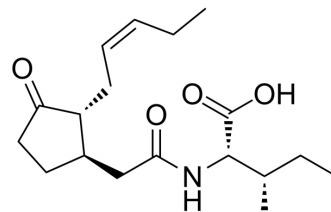


## (-)-Jasmonoyl-L-isoleucine

Cat. No.:	HY-142006
CAS No.:	120330-93-0
Molecular Formula:	C <sub>18</sub> H <sub>29</sub> NO <sub>4</sub>
Molecular Weight:	323.43
Target:	Endogenous Metabolite
Pathway:	Metabolic Enzyme/Protease
Storage:	Please store the product under the recommended conditions in the Certificate of Analysis.



### BIOLOGICAL ACTIVITY

Description	(-)-Jasmonoyl-L-isoleucine ((-)-JA-L-Ile) is an inactive endogenous hormone. (-)-Jasmonoyl-L-isoleucine is an enantiomer of (+)-JA-L-Ile <sup>[1]</sup> .
IC <sub>50</sub> & Target	Human Endogenous Metabolite

### REFERENCES

[1]. Sandra Fonseca, et al. (+)-7-iso-Jasmonoyl-L-isoleucine is the endogenous bioactive jasmonate. Nat Chem Biol. 2009 May;5(5):344-50.

**Caution: Product has not been fully validated for medical applications. For research use only.**

Tel: 609-228-6898

Fax: 609-228-5909

E-mail: tech@MedChemExpress.com

Address: 1 Deer Park Dr, Suite Q, Monmouth Junction, NJ 08852, USA