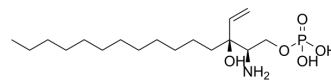


RBM10-8

Cat. No.:	HY-142032
CAS No.:	2407372-42-1
Molecular Formula:	C ₁₇ H ₃₆ NO ₅ P
Molecular Weight:	365.45
Target:	LPL Receptor
Pathway:	GPCR/G Protein
Storage:	Please store the product under the recommended conditions in the Certificate of Analysis.



BIOLOGICAL ACTIVITY

Description

RBM10-8 is irreversible inhibitor of recombinant human sphingosine-1-phosphate lyase (hS1PL). Sphingosine-1-phosphate (S1P) is a sphingolipid (SL) that acts as a signaling molecule regulating diverse cellular processes such as cell proliferation and differentiation, angiogenesis, immune function, inflammation, and development^[1].

REFERENCES

[1]. Guillem Pons, et al. A Mechanism-Based Sphingosine-1-phosphate Lyase Inhibitor. J Org Chem. 2020 Jan 17;85(2):419-429.

Caution: Product has not been fully validated for medical applications. For research use only.

Tel: 609-228-6898

Fax: 609-228-5909

E-mail: tech@MedChemExpress.com

Address: 1 Deer Park Dr, Suite Q, Monmouth Junction, NJ 08852, USA