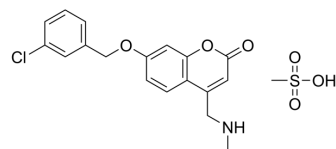


## NW-1772 methanesulfonate

Cat. No.:	HY-14205
CAS No.:	911290-35-2
Molecular Formula:	C <sub>19</sub> H <sub>20</sub> ClNO <sub>6</sub> S
Molecular Weight:	425.88
Target:	Monoamine Oxidase
Pathway:	Neuronal Signaling
Storage:	Please store the product under the recommended conditions in the Certificate of Analysis.



### BIOLOGICAL ACTIVITY

#### Description

NW-1772 (methanesulfonate) (22b) is a potent and selective monoamine oxidase (MAO) B inhibitor. NW-1772 (methanesulfonate) is the equivalent of HY-111156 NW-1772. NW-1772 has some advantages, such as rapid blood-brain barrier penetration, short-acting and reversible inhibitory activity, slight inhibition of selected cytochrome P450s, and low in vitro toxicity. NW-1772 can be used for the research of neurodegenerative diseases<sup>[1]</sup>.

### REFERENCES

[1]. Pisani L, et al. Discovery of a novel class of potent coumarin monoamine oxidase B inhibitors: development and biopharmacological profiling of 7-[(3-chlorobenzyl)oxy]-4-[(methylamino)methyl]-2H-chromen-2-one methanesulfonate (NW-1772) as a highly potent, selective, reversible, and orally active monoamine oxidase B inhibitor. *J Med Chem.* 2009 Nov 12;52(21):6685-706.

**Caution: Product has not been fully validated for medical applications. For research use only.**

Tel: 609-228-6898

Fax: 609-228-5909

E-mail: tech@MedChemExpress.com

Address: 1 Deer Park Dr, Suite Q, Monmouth Junction, NJ 08852, USA