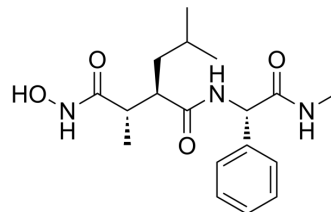


KB-R7785

Cat. No.:	HY-142069
CAS No.:	168158-16-5
Molecular Formula:	C ₁₈ H ₂₇ N ₃ O ₄
Molecular Weight:	349.42
Target:	MMP
Pathway:	Metabolic Enzyme/Protease
Storage:	Please store the product under the recommended conditions in the Certificate of Analysis.



BIOLOGICAL ACTIVITY

Description

KB-R7785 is a novel matrix metalloproteinase (MMP) inhibitor, which improves insulin sensitivity by inhibiting TNF- α production. KB-R7785 can be used for diabetes research. KB-R7785 has a protective efficacy against focal cerebral ischemia [1][2].

REFERENCES

- [1]. Morimoto Y, et al. KB-R7785, a novel matrix metalloproteinase inhibitor, exerts its antidiabetic effect by inhibiting tumor necrosis factor- α production. *Life Sci.* 1997;61(8):795-803.
- [2]. Jiang X, et al. Matrix metalloproteinase inhibitor KB-R7785 attenuates brain damage resulting from permanent focal cerebral ischemia in mice. *Neurosci Lett.* 2001 Jun 1;305(1):41-4.

Caution: Product has not been fully validated for medical applications. For research use only.

Tel: 609-228-6898

Fax: 609-228-5909

E-mail: tech@MedChemExpress.com

Address: 1 Deer Park Dr, Suite Q, Monmouth Junction, NJ 08852, USA