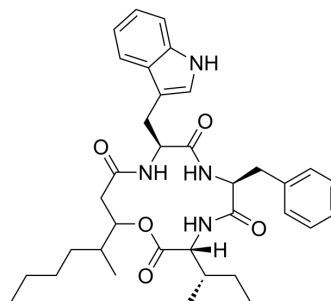


## Beauverolide Ja

<b>Cat. No.:</b>	HY-142087
<b>CAS No.:</b>	76265-41-3
<b>Molecular Formula:</b>	C <sub>35</sub> H <sub>46</sub> N <sub>4</sub> O <sub>5</sub>
<b>Molecular Weight:</b>	602.76
<b>Target:</b>	Calmodulin; Endogenous Metabolite
<b>Pathway:</b>	Membrane Transporter/Ion Channel; Metabolic Enzyme/Protease
<b>Storage:</b>	Please store the product under the recommended conditions in the Certificate of Analysis.



### BIOLOGICAL ACTIVITY

<b>Description</b>	Beauverolide Ja, a cyclotetradepsipeptide, is a potent calmodulin (CaM) inhibitor with a K <sub>D</sub> of 0.078 μM and a K <sub>i</sub> of 0.39 μM for Ca <sup>2+</sup> -CaM. Beauverolide Ja is a secondary metabolite of <i>Isaria fumosorosea</i> <sup>[1]</sup> .
<b>IC<sub>50</sub> &amp; Target</b>	Fungal Metabolite

### REFERENCES

- [1]. Abraham Madariaga-Mazón, et al. Potent anti-calmodulin activity of cyclotetradepsipeptides isolated from *Isaria fumosorosea* using a newly designed biosensor. *Nat Prod Commun.* 2015 Jan;10(1):113-6.
- [2]. Qunfang Weng, et al. Secondary Metabolites and the Risks of *Isaria fumosorosea* and *Isaria farinose*. *Molecules.* 2019 Feb 13;24(4):664.

**Caution: Product has not been fully validated for medical applications. For research use only.**

Tel: 609-228-6898

Fax: 609-228-5909

E-mail: tech@MedChemExpress.com

Address: 1 Deer Park Dr, Suite Q, Monmouth Junction, NJ 08852, USA