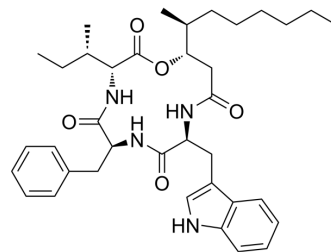


## Beauverolide Ka

Cat. No.:	HY-142088
CAS No.:	76265-42-4
Molecular Formula:	C <sub>37</sub> H <sub>50</sub> N <sub>4</sub> O <sub>5</sub>
Molecular Weight:	630.82
Target:	Endogenous Metabolite
Pathway:	Metabolic Enzyme/Protease
Storage:	Please store the product under the recommended conditions in the Certificate of Analysis.



### BIOLOGICAL ACTIVITY

Description	Beauverolide Ka, a cyclotetradepsipeptide, is a metabolite of <i>Beauveria bassiana</i> fungus. Beauverolide Ka stimulates glucose uptake in cultured rat L6 myoblasts at 50 μM. Beauverolide Ka exhibits protecting effects on HEI-OC1 cells at 10 μM and shows dose-dependent activity in both L6 myoblasts and myotubes <sup>[1][2]</sup> .
IC <sub>50</sub> & Target	Fungal Metabolite

### REFERENCES

- [1]. Yuan-Fei Zhou, et al. 3-Hydroxy-4-methyldecanoic Acid-Containing Cyclotetradepsipeptides from an Endolichenic *Beauveria* sp. *J Nat Prod.* 2021 Apr 23;84(4):1244-1253.
- [2]. Feifei Luo, et al. Differential metabolic responses of *Beauveria bassiana* cultured in pupae extracts, root exudates and its interactions with insect and plant. *J Invertebr Pathol.* 2015 Sep;130:154-64.

**Caution: Product has not been fully validated for medical applications. For research use only.**

Tel: 609-228-6898

Fax: 609-228-5909

E-mail: tech@MedChemExpress.com

Address: 1 Deer Park Dr, Suite Q, Monmouth Junction, NJ 08852, USA