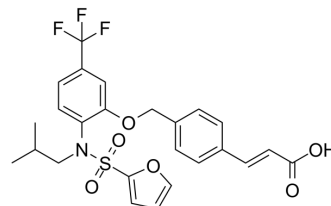


## ONO-8713

Cat. No.:	HY-142868
CAS No.:	459411-08-6
Molecular Formula:	C <sub>25</sub> H <sub>24</sub> F <sub>3</sub> NO <sub>6</sub> S
Molecular Weight:	523.52
Target:	Prostaglandin Receptor
Pathway:	GPCR/G Protein
Storage:	Please store the product under the recommended conditions in the Certificate of Analysis.



## BIOLOGICAL ACTIVITY

Description
ONO-8713 is a selective prostaglandin E receptor subtype EP1 antagonist.

## REFERENCES

[1]. Watanabe K, et al. Inhibitory effect of a prostaglandin E receptor subtype EP(1) selective antagonist, ONO-8713, on development of azoxymethane-induced aberrant crypt foci in mice. *Cancer Lett.* 2000 Aug 1;156(1):57-61.

**Caution: Product has not been fully validated for medical applications. For research use only.**

Tel: 609-228-6898

Fax: 609-228-5909

E-mail: [tech@MedChemExpress.com](mailto:tech@MedChemExpress.com)

Address: 1 Deer Park Dr, Suite Q, Monmouth Junction, NJ 08852, USA