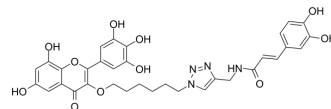


HPA-IN-1

Cat. No.:	HY-143268
Molecular Formula:	C ₃₃ H ₃₂ N ₄ O ₁₁
Molecular Weight:	660.63
Target:	Amylases; Glucosidase
Pathway:	Metabolic Enzyme/Protease
Storage:	Please store the product under the recommended conditions in the Certificate of Analysis.



BIOLOGICAL ACTIVITY

Description	HPA-IN-1 (Compound 1) is a potent and selective human pancreatic α -amylase (HPA) inhibitor with IC ₅₀ values of 12.0 μ M and 410.4 μ M against HPA and α -glucosidase, respectively ^[1] .
IC ₅₀ & Target	IC ₅₀ : 12.0 μ M (HPA), 410.4 μ M (α -glucosidase) ^[1]
In Vitro	HPA-IN-1 (Compound 1) has three hydrogen bonds interacting with HPA ^[1] . MCE has not independently confirmed the accuracy of these methods. They are for reference only.

REFERENCES

[1]. Chen W, et al. Design and synthesis of epigallocatechin (EGC) analogs selective to inhibit α -amylase over α -glucosidases via the incorporation of caffeine acid and its derivatives. *Bioorg Chem.* 2022 Feb;119:105515.

Caution: Product has not been fully validated for medical applications. For research use only.

Tel: 609-228-6898

Fax: 609-228-5909

E-mail: tech@MedChemExpress.com

Address: 1 Deer Park Dr, Suite Q, Monmouth Junction, NJ 08852, USA