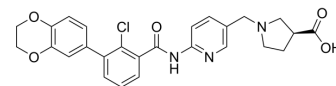


## PD-1/PD-L1-IN-25

Cat. No.:	HY-143305
CAS No.:	2768759-52-8
Molecular Formula:	C <sub>26</sub> H <sub>24</sub> ClN <sub>3</sub> O <sub>5</sub>
Molecular Weight:	493.94
Target:	PD-1/PD-L1
Pathway:	Immunology/Inflammation
Storage:	Please store the product under the recommended conditions in the Certificate of Analysis.



### BIOLOGICAL ACTIVITY

<b>Description</b>	PD-1/PD-L1-IN-25 (compound D2) is an inhibitor of PD-1/PD-L1 interaction with an IC <sub>50</sub> value of 16.17 nM. PD-1/PD-L1-IN-25 activates the antitumor immunity of T cells efficiently in PBMCs. PD-1/PD-L1-IN-25 can be used for the research of cancer <sup>[1]</sup> .								
<b>IC<sub>50</sub> &amp; Target</b>	IC <sub>50</sub> : 16.17 nM (PD-1/PD-L1) <sup>[1]</sup> .								
<b>In Vitro</b>	<p>PD-1/PD-L1-IN-25 (0-1 μM; 90 min) inhibits PD-1/PD-L1 interaction with an IC<sub>50</sub> value of 16.17 nM<sup>[1]</sup>.            PD-1/PD-L1-IN-25 (0-2 μM; 2 h) activates the antitumor immunity of T cells efficiently in PBMCs<sup>[1]</sup>.            MCE has not independently confirmed the accuracy of these methods. They are for reference only.</p> <p>Cell Cytotoxicity Assay<sup>[1]</sup></p> <table border="1"> <tr> <td>Cell Line:</td> <td>MDA-MB 231 cells by human PBMCs</td> </tr> <tr> <td>Concentration:</td> <td>0-2 μM</td> </tr> <tr> <td>Incubation Time:</td> <td>2 hours</td> </tr> <tr> <td>Result:</td> <td>Showed no toxicity towards MDA-MB 231 cells, and activated the antitumor immunity of PBMCs to kill MDA-MB 231 cells efficiently at a concentration of 1.0 μM.</td> </tr> </table>	Cell Line:	MDA-MB 231 cells by human PBMCs	Concentration:	0-2 μM	Incubation Time:	2 hours	Result:	Showed no toxicity towards MDA-MB 231 cells, and activated the antitumor immunity of PBMCs to kill MDA-MB 231 cells efficiently at a concentration of 1.0 μM.
Cell Line:	MDA-MB 231 cells by human PBMCs								
Concentration:	0-2 μM								
Incubation Time:	2 hours								
Result:	Showed no toxicity towards MDA-MB 231 cells, and activated the antitumor immunity of PBMCs to kill MDA-MB 231 cells efficiently at a concentration of 1.0 μM.								

### REFERENCES

[1]. Lu L, et al. Design, Synthesis, and Evaluation of PD-1/PD-L1 Antagonists Bearing a Benzamide Scaffold. ACS Med Chem Lett. 2022 Mar 29;13(4):586-592.

**Caution: Product has not been fully validated for medical applications. For research use only.**

Tel: 609-228-6898

Fax: 609-228-5909

E-mail: tech@MedChemExpress.com

Address: 1 Deer Park Dr, Suite Q, Monmouth Junction, NJ 08852, USA